

PARTS LIST FOR NO. 1210  
POWER SQUARING SHEAR

Steel List

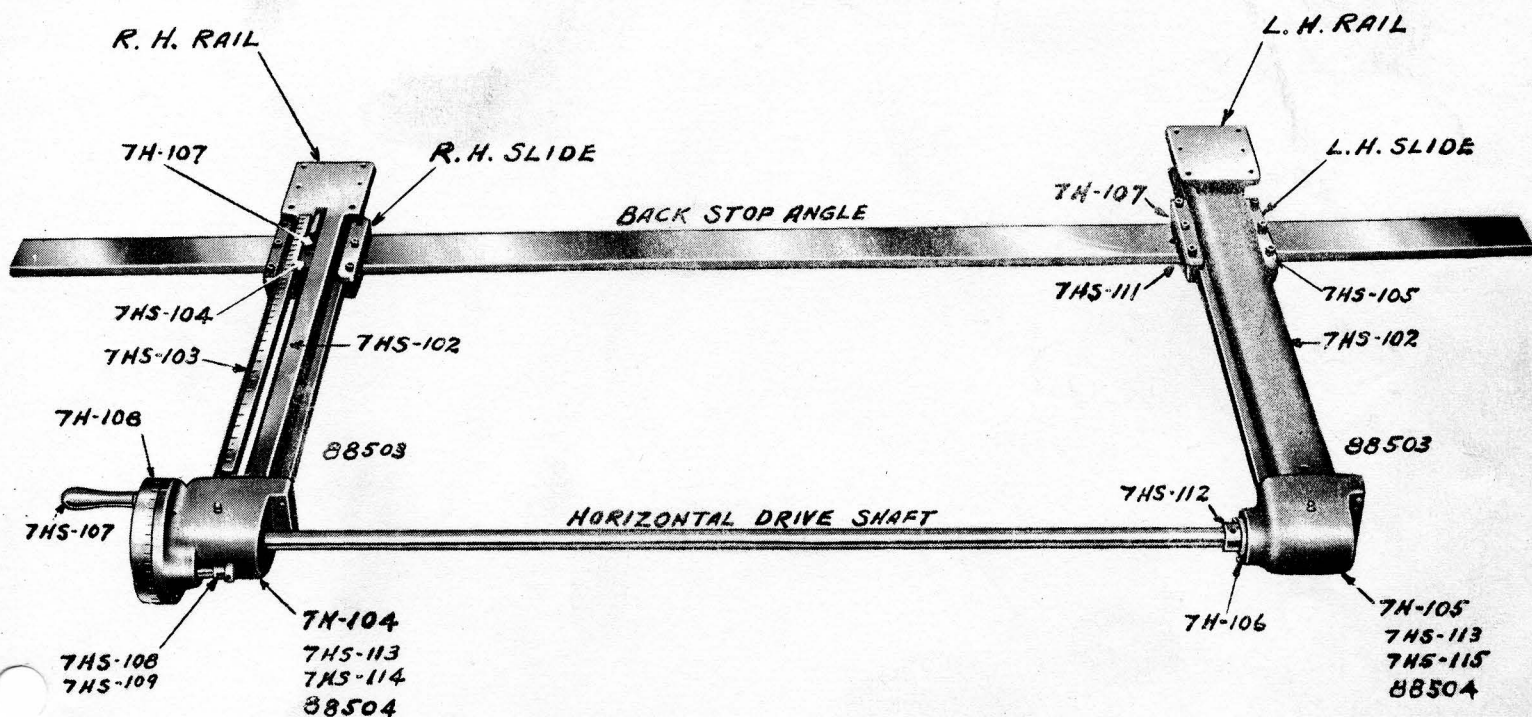
<u>Name of Part</u>	<u>Part No.</u>	<u>Name of Part</u>	<u>Part No.</u>
Pinion Shaft	8BS-1	Eye Bolts	7JS-8
Eccentric Shaft	8BS-2	Connection End Pins	7JS-9
Tension Rod	8BS-3	Eccentric Connections	7JS-10
Foot Treadle Shaft	8BS-4	Connection Ends	7JS-24
		Gear Guard Cover Knob	7JS-27
Pawl Lifting Stud	7KS-35	Clutch Retracting Roller	7JS-53
Non-Repeat Knob	7KS-38	Roller Stud	7JS-54
Non-Repeat Roller Stud	7KS-39	Cam Retracting Slide	7JS-55
Clutch Release Cam	7KS-40	Non-Repeat Pawl	7JS-56
Non-Repeat Arm Roller	7KS-41	Pawl Pin	7JS-57
Non-Repeat Knob Stud	7KS-46	Pawl Stud	7JS-58
Spring Stud	7KS-47	Collars	7JS-66
Cam Retracting Slide Stop	7KS-48	Clutch Driving Keys	7JS-68
Non-Repeat Arm Pivot Pin	7KS-49	Pinion	7JS-71
Foot Treadle Plugs	7KS-50	Clutch	7JS-78
Pedal Spring Eye Bolt (5/8" dia.)	7KS-51	Clutch Plate	7JS-79
Pedal Spring Eye Bolt (1-1/2" dia.)	7KS-51	Gear Guard	7JS-82
Pawl Stud Nut	7KS-52	Gear Guard Cover	7JS-83
Brake Bracket Pin	7KS-55	Cam Retracting Slide Bushing	7JS-84
Holddown Guide Gibs	7KS-56		
Clutch Spring Studs	7KS-58	Spring Rod Ends	7ES-5
Lifting Stud Striking Pin	7KS-59		
Cam Ret. Slide Spacer	7KS-60	Front Fence	7NS-8
Knife Bar Take Up Gibs	7KS-64	Front Fence Bolts	7NS-9
Spring Housing	7KS-65	Holddown Stops	7NS-28
Spring Pressure Plungers	7KS-66		
Tension Rod Stud	7KS-67	Foot Treadle	7TS-8
Belt Guard	7KS-70		
Bull Gear Retaining Ring	7KS-71		
Bull Gear Retaining Ring	7KS-72		
Retaining Ring Limit Pins	7KS-73		
Side Gauges	7KS-74		
Front Extension Bolts	7KS-75		

PARTS LIST FOR NO. 1210  
POWER SQUARING SHEAR

Casting List

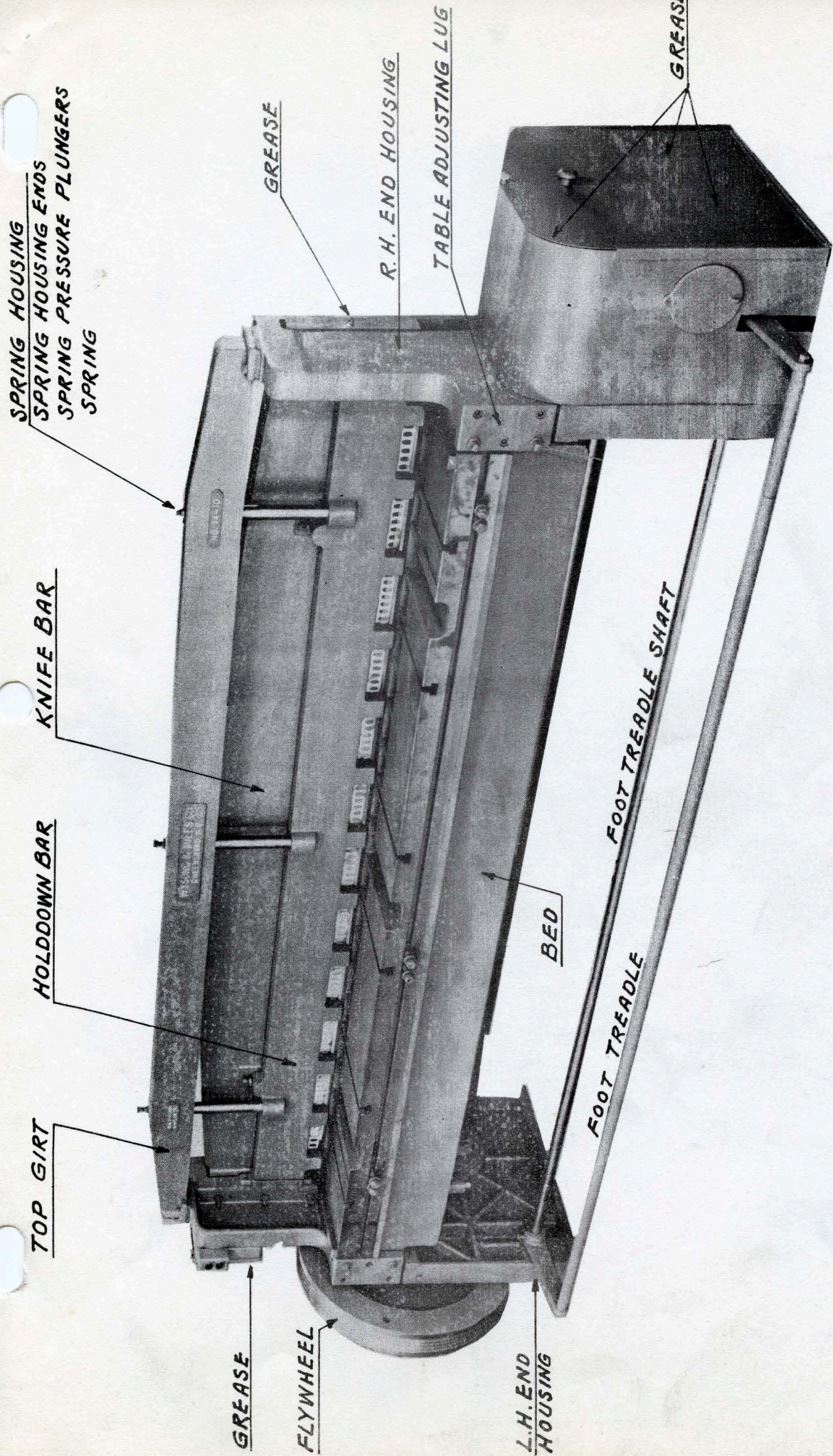
<u>Name of Part</u>	<u>Part No.</u>
Table	8B-1
Knife Bar	8B-2
Top Girt	8B-3
Eccentrics	8B-4
Brake Drum	7K-49
Clutch Slide Bracket	7K-50
Non-Repeat Arm	7K-51
Brake Bracket	7K-55
Non-Repeat Cam	7K-56
Pinion Shaft Bushings	7K-57
Eccentric Shaft Bushing	7K-58
Flywheel	7K-59
Motor Pulley	7K-60
Table Extensions	7K-61
Eccentric Straps (Upper Half)	7K-62
Eccentric Straps (Lower Half)	7K-63
Eccentric Strap Bushings	7K-64
End Housing, R. H.	7K-65
End Housing, L. H.	7K-66
Knife Bar Gibs	7K-68
Table Adjusting Lugs	7K-69
Clutch Pawl Lever	7K-72
Foot Treadle Lever	7K-73
Motor Base	7K-74
Eccentric Shaft Bushings	7K-75
Male Brake Shoe	7J-27
Female Brake Shoe	7J-28
Bull Gear	7J-50
Gear Guard Cover	7J-60
Holddown Guides	7E-16
Holddown Bar	7T-3

PARTS LIST FOR WYSONG & MILES PARALLEL BACK GAUGE

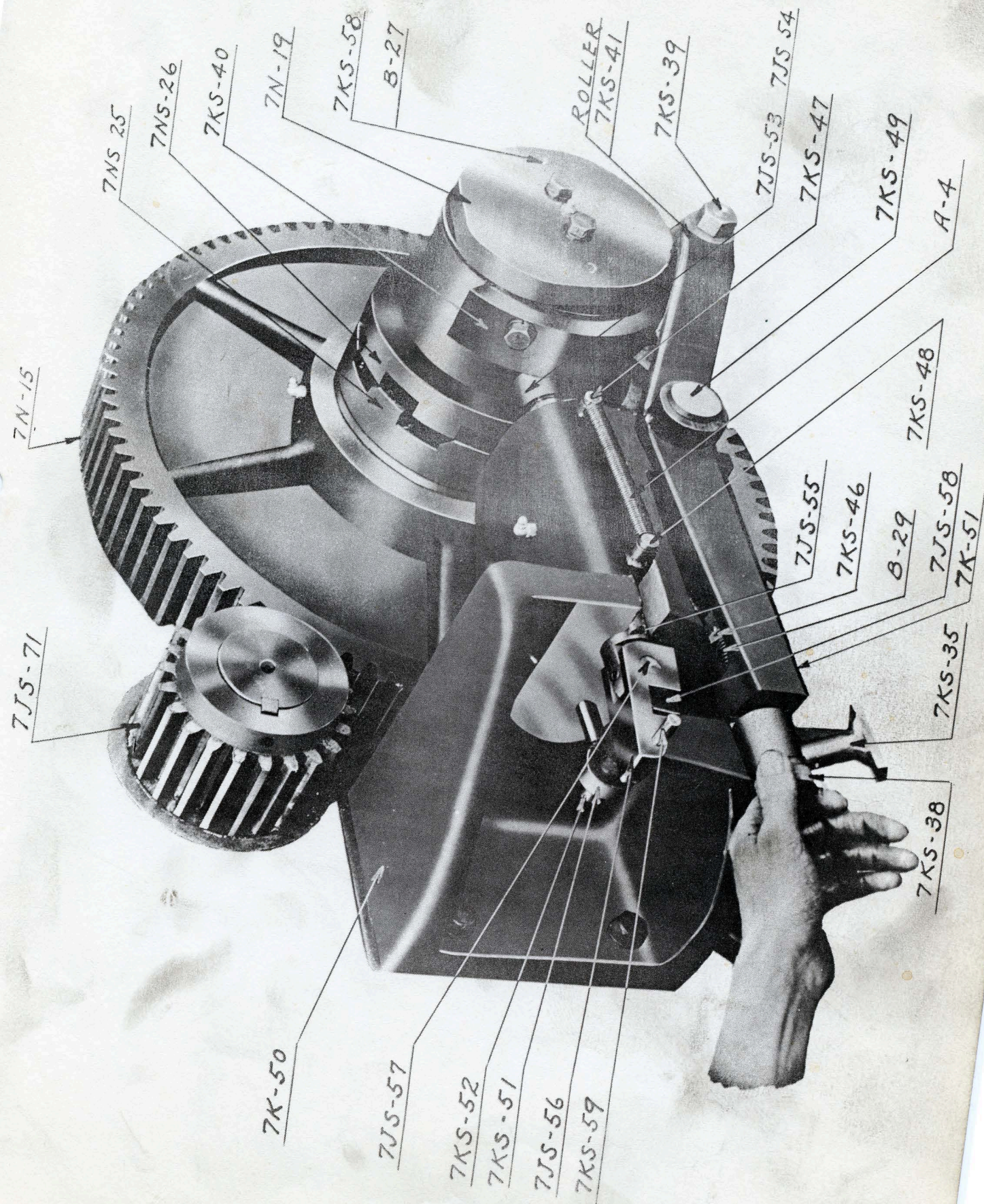


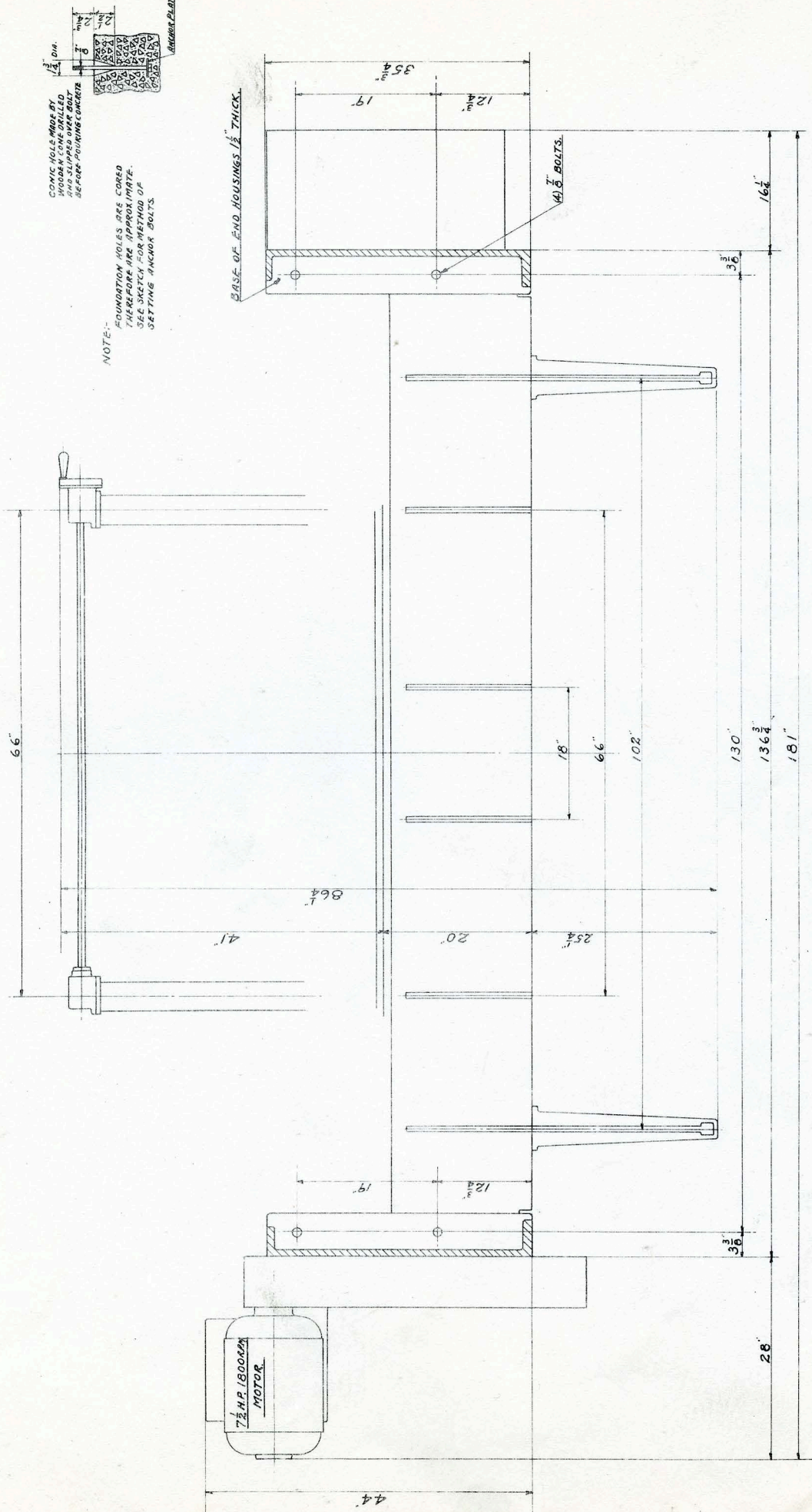
PARTS LIST FOR NO. 1210 & NO. 1410 PRECISION BACK GAUGE

<u>Name of Part</u>	<u>Part No.</u>	<u>No. 1410 Only</u>	
Gear Housing, R. H.	7H-104		
Gear Housing, L. H.	7H-105	Rail, R. H.	7H-167
Gear Housing Cap. L. H.	7H-106	Rail, L. H.	7H-166
Dial	7H-108	Slide, R. H.	7H-152
Driving Nuts (Stationary)	7H-200	Slide, L. H.	7H-153
Driving Nuts (Adjustable)	7H-201	Slide Gibs	7HS-105
Back Gauge Angle	7H-60		
Horizontal Drive Shaft	7HS-68	<u>No. 1210 Only</u>	
Scale	7HS-103		
Gauge Indicator	7HS-104	Slide, R. H.	8B-5
Handle	7HS-107	Slide, L. H.	8B-6
Locking Pin	7HS-108	Rail, R. H.	7H-168
Locking Pin Handle	7HS-109	Rail, L. H.	7H-169
Washer	7HS-110		
Adjustable Bolt	7HS-111	Slide Gibs	7HS-137
Screw Thrust Collars	7HS-112		
Screw Miter Gears	7HS-113		
Horizontal Miter Gears, R. H.	7HS-114		
Horizontal Miter Gears, L. H.	7HS-115		
Dial Adjusting Plate	7HS-122		
Slide Screws	7HS-140		



**NOTE:-**  
 GREASE PINION AND ECCENTRIC SHAFT  
 BEARINGS INSIDE BOTH END HOUSINGS,  
 ALSO CONNECTION ENDS AND  
 ECCENTRIC STRAPS AT REAR





CONCRETE HOLE MADE BY MOTOR AND SLIPPED OVER BOLT BEFORE POURING CONCRETE

NOTE: FOUNDATION HOLES ARE CORED THEREFORE ARE APPROXIMATE. SEE SKETCH FOR METHOD OF SETTING ANCHOR BOLTS.

ANCHOR PLATE

WYSONG AND MILES CO.  
GREENSBORO, N. C.

FLOOR PLAN FOR NO. 1210 SHEAR.