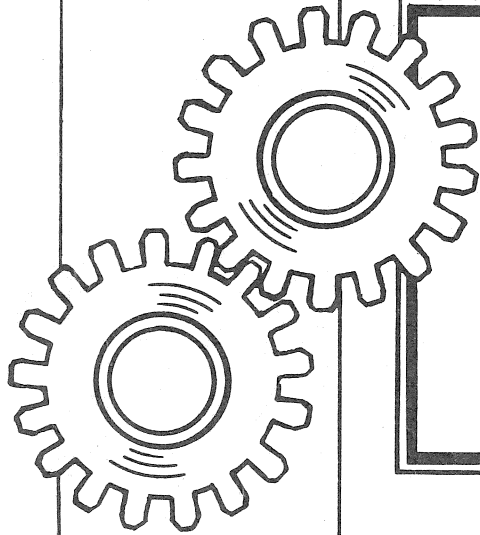


W Y S O N G [®]

PARTS LIST



MODEL NO.
1250

W Y S O N G & M I L E S C O M P A N Y

P. O. Box 21168 • Highway 29 North • Phone (919) 621-3960

GREENSBORO, NORTH CAROLINA 27420

WYSONG AND MILES COMPANY
GREENSBORO, NORTH CAROLINA

PARTS LIST AND INSTRUCTIONS
POWER SQUARING SHEAR NO. 1250

When ordering parts, please refer to the item number, quantity, name of part, part number, and serial number of your machine. The serial number will be found stenciled on the table outside the right-hand side gauge.

June, 1975

TABLE, END HOUSING, HOLDDOWN, AND KNIFE BAR ASSEMBLIES FOR NO. 1250
(See Figure 1)

<u>ITEM NO.</u>	<u>QUANTITY</u>	<u>NAME OF PART</u>	<u>PART NUMBER</u>
1	1	Table	S50-80
2	1	Left-Hand End Housing	S50-82
2A	2	Front Covers	S38S-188
2B	2	Side Covers	S38S-187
2C	1	Rear Cover, Left-Hand	S38S-190
3	1	Right-Hand End Housing	S50-81
3A	1	Rear Cover, Right-Hand	S38S-189
4	1	Knife Bar	S50-61
5	1	Tension Rod - Long	S50-91
5A	1	Tension Rod - Short	S50-90
5B	1	Tension Rod Turnbuckle	S38S-307
6	1	Tension Rod Stud	S38S-306
7	2	Main Wear Plates (Nonmetallic)	MG-52
8	2	Take-Up Wear Plates (Nonmetallic)	MG-51
9	2	Eye bolts	S50S-89
11	2	Blades	5" x 1-1/8" x 148"
12	38	Blade Bolts	3/4" x 5"
13	38	Blade Bolt Washers	3/4"
14	38	Blade Bolt Nuts	3/4"
15	1	Spring Bracket, Right-Hand	S50-73
	1	Spring Bracket, Left-Hand	S50-74
16	2	Upper Spring Seats	S38-303
17	2	Inside Counterbalance Springs	B-93
18	2	Outside Counterbalance Springs	B-92
19	2	Lower Spring Seats	S38-304
20A	2	Spring Rods	S38S-42
20B	2	Spring Mounting Shafts	S38S-41
20C	4	Spacing Collars	7HS-84
20D	2	Locating Plates	S38S-43
22	2	Gibs (Stationary)	S50-80
25A	2	Take-Up Gib Adjusting Brackets	S50S-36
25B	1	Take-Up Adjusting Plate, Right-Hand	S38-72
	1	Take-Up Adjusting Plate, Left-Hand	S38-73
25C	1	Knife Bar Take-Up Gib, Right-Hand	S38-81
	1	Knife Bar Take-Up Gibs, Left-Hand	S38-82
25D	2	Take-Up Gib Supports	S50S-122
26	8	Table Bolts	1-1/2" x 8"
	2	Table Bolts	1-1/2" x 6-1/2"
27	1	Table Adjusting Lug, Right-Hand	S38-42
	1	Table Adjusting Lug, Left-Hand	S38-43
28	8	Table Bolt Washers	S38S-32
30	4	Table Bolt Locking Plates	S38S-30
31	1	Table Plate	S50S-124
32	2	Side Gauge	S38S-33

TABLE, END HOUSING, HOLDDOWN AND KNIFE BAR ASSEMBLIES FOR NO. 1250
(See Figure 1)

<u>ITEM NO.</u>	<u>QUANTITY</u>	<u>NAME OF PART</u>	<u>PART NUMBER</u>
33	4	Table Scales	
37	9	T-bolts with nuts and washers	8GS-82
38	4	Table Extensions	S38-44
39	2	Disappearing Stops	8GS-160A
40	1	Angle Gauge	5Y-66
43	1	Finger Guard	S50S-102
44	1	Holddown	S50S-97
45	21	Ball Sleeves	S38S-145
46	21	Sleeve Springs	B-110
47	21	Holddown Feet	S38S-146
48	21	Holddown Pins	S50S-123
50	21	Holddown Pressure Springs	B-91
55	42	Steel Balls	1/2"
56	2	Dowel Pins	8GS-108
56A	18	Holddown Feet Washers	S38S-55
57	2	Top Return Spring Guides	S38S-65
58	2	Holddown Return Springs	B-83
59	2	Lower Return Spring Seats	S38S-66
60	2	Holddown Locking Nuts	S50S-73
61	2	Holddown Locking Nut Washers	S50S-127
62	2	Holddown Pull Rods	S50S-115
63	3	Finger Guard Guides	8H-53
64	3	Finger Guard Guide Pins	8HS-115
65	2	Finger Guard Spacer Blocks	S50S-135
66	2	Holddown Lever Pins	S38S-61
67	2	Holddown Lever Bushings	S38-30
68	2	Holddown Levers	S50-84
69	2	Lever Pin Spacers	S38S-63
69A	4	Lever Pin Spacers	S38S-62
70	4	Retaining Pins	S10S-35 & 36
71	2	Holddown Pull Rods Pins	S38S-160
72		Not Required	
73		Not Required	
74	4	Roller Bearings (McGill)	RS-10
74A	4	Thrust Washers	S50S-118
74B	2	Cam Rollers	S50S-117
74C	2	Cam Roller Pins	S50S-116
74D	2	Holddown Gibs	S38S-68
74E	1	Ramp Plate	S50S-120
74F	5	Ramp Plate Brackets	S50S-121
74G	14	Ball Transfers	Type 202A
74H	14	Ball Transfer Supports	S50-87
74I	14	Ball Transfer Retainers	S50S-133
74J	14	Springs	B-122

GEAR CASE ASSEMBLY FOR NO. 1250
(See Figure 2)

<u>ITEM NO.</u>	<u>QUANTITY</u>	<u>NAME OF PART</u>	<u>PART NUMBER</u>
75	1	Lock Nut	N-11
76	1	Lock Washer	W-11
77	1	Flywheel	S50-52
77A	1	Flywheel Clutch Pressure Plate	S50S-65
77B	2	Flywheel Clutch Discs	Type US-1488
77C	1	Flywheel Hub	S50-54
77D	8	Flywheel Clutch Spring Studs	S50S-66
77E	8	Springs	B-97
77F	8	Spring Stud Washers	S50S-67
77G	16	Flex-loc Nuts	1"-8
77H	1	Retaining Cup	S38S-96
78	1	Pinion Shaft Seal	60930
79	1	Pinion Shaft Cap	S38-8
80	2	Bearings-Pinion Shaft	22314
81	1	Pinion Shaft	S50S-139
82	2	Lock Washers	W-14
83	2	Lock Nuts	N-14
84	2	Lock Nuts	N-14
85	2	Lock Washers	W-14
86	2	Bearings (Intermediate Shaft)	22314
87	1	Intermediate Gear	S50S-140
88	1	Intermediate Shaft	S50S-61
89	1	Intermediate Shaft Bearing Cap	S38-7
91	1	Top Center Indicator Housing	S38-14
91A	1	Thrust Bearing Adjusting Screw	S38S-21
91B	1	Thrust Block	S38S-20
91C	1	Thrust Bearing	F-43
92	1	Top Center Indicator	S50-71
93	1	Oil Level Gauge	B5592
94	1	Gear Case Cover	S50-64
94A	1	Gear Case Cover Bushing	S50-64B
95	1	Gear Case Cover Gasket	
96	1	Bull Gear	S50S-80
96A	1	Bull Gear Bushing	S50-79
97	1	Clutch Drive Plate	S50S-83
97A	15	Allen Shoulder Screws	3/4" x 3-3/4" x 5/8-11 thd.
98	1	Bull Gear Spacing Collar	S50S-81
99	1	Clutch Driven Plate	S50S-82
100	1	Clutch Release Cam	S50-69
101	4	Clutch Springs	B-85
102	4	Clutch Spring Studs	S38S-118
103	1	Non-Repeat Cam	S50-70
104	1	Thrust Bearing	G-61
105	1	Eccentric Shaft Bearing Bushing (Outside, Right-Hand)	S50-65B
106	1	Eccentric Shaft Bearing (Outside, Right-Hand)	S50-65

GEAR CASE ASSEMBLY FOR NO. 1250
(See Figure 2)

<u>ITEM NO.</u>	<u>QUANTITY</u>	<u>NAME OF PART</u>	<u>PART NUMBER</u>
107	1	Gear Case	S50-51
108	1	Air Vent	
109	1	Gear Case Rear Cover	S38-9
110	1	Gear Case Hand Hole Cover	S38S-186
111	1	Non-Repeat Roller Stud	7KS-39
112	1	Non-Repeat Arm Roller	7KS-41
113	1	Non-Repeat Arm Pivot Shaft	8HS-46
114	2	Tru-Arc Lock Rings	5100-100
115	2	Sleeve Retaining Collars	8HS-88
116	1	Non-Repeat Arm Sleeve	8HS-44
116A	2	Non-Repeat Arm Sleeve Bushings	8H-22
117	1	Non-Repeat Arm	S38-16
118	1	Non-Repeat Pawl Lifting Lever	S38-69
119	1	Steel Ball	1/2"
119A	1	Non-Repeat Slide Spring	B-37
120	1	Pawl Striking Stud	8HS-48
124	1	Clutch Bracket Spring Cap	S38-11
125	1	Clutch Bracket	S38-70
126	1	Cam Slide Spring	B-89
127	1	Cam Retracting Slide	S50S-84
128	1	Cam Retracting Roller	S38S-130
129	1	Pawl Lifting Pin	8HS-41
130	1	Non-Repeat Pawl	8HS-40
131	1	Pawl Slide Pin	S38S-18
132	1	Pawl Retaining Collar	8HS-38
133	1	Tru-Arc Lock Ring	5100-62
134	1	Drain Plug	
135	1	Tru-Arc Lock Ring	5100-100
136	1	Pawl Engaging Plunger	S38S-17
137	1	Engaging Plunger Guide	S38-17
138	1	Lock Pin	7KS-96
139	1	Treadle Lock Spring	B-58
140	1	Pin Guide	7KS-97
141	1	Knob	8HS-52
142	1	Shifter Arm Shaft	S38S-19
143	2	Woodruff Keys	808
144	1	Lifting Lever Shifting Arm	S38-18
145	1	Tru-Arc Lock Ring	5100-100
146	1	Shifting Stud	8HS-49

ECCENTRIC SHAFT AND BRAKE ASSEMBLIES FOR NO. 1250

(See Figure 3)

<u>ITEM NO.</u>	<u>QUANTITY</u>	<u>NAME OF PART</u>	<u>PART NUMBER</u>
170	1	Eccentric Shaft	S50S-86
171	2	Clutch Drive Keys	S38S-11
172	4	Eccentric Keys	S38S-48
172A	2	Holddown Cam Keys	S38S-69
172B	4	Eccentric Key Locks	S38S-49
173	1	Clamping Sleeve Key	
174	2	Eccentric	S50-62
175	2	Eccentric Strap Bushings	S50-63B
176	2	Eccentric Straps	S50-83
177	2	Connection End Pins	S50S-94
177A	2	Keeper Plates	S50-76
179	1	Brake Cover	S38S-199
180	1	Clamping Sleeve Collar	S50S-100
181	1	Brake Drum Clamping Sleeve	S50S-99
182	1	Brake Cam	8HS-97
183	1	Brake Drum	S38-75
184	1	Brake Spring	B-21
185	1	Spring Stud	S10S-76
186	2	Spring Stud Washers	8HS-102
197	1	Brake Pivot Stud	S38S-73
188	2	Tru-Arc Lock Rings	5100-100
189	1	Brake Arm Pivot Stud	8HS-105
191	1	Male Brake Shoe Stop	8HS-104
192	1	Female Brake Shoe	S38-77
193	1	Brake Arm	S38S-126
194	1	Male Brake Shoe	S38-76
195	1	Cam Follower	CF-2
196	1	Brake Lining	2" x 1/4" x 15"
	1	Brake Lining	2" x 1/4" x 18"
197A	1	Brake Thrust Washer	S50S-101
198A	1	Oil Seal	61369
199	1	Eccentric Shaft Bearing (Outside, Left-Hand)	S50-66
200	1	Eccentric Shaft Bushing (Outside, Left-Hand)	S50-66B
201	2	Holddown Cams	S50-72
202	2	Eccentric Shaft Bearing Bushing (Inside, Right-Hand)	S50-67B
203	1	Eccentric Shaft Bearing (Inside, Left-Hand)	S50-68
203	1	Eccentric Shaft Bearing (*Inside, Right-Hand)	S50-67

FOOT TREADLE AND MOTOR ASSEMBLIES FOR NO. 1250

(See Figure 4)

<u>ITEM NO.</u>	<u>QUANTITY</u>	<u>NAME OF PART</u>	<u>PART NUMBER</u>
215	1	Foot Treadle	S50S-87
216	1	Clutch Pawl Lever	S38-35
217	2	Tru-Arc Lock Rings	5100-62
218	2	Pin Washers	8HS-59
219	1	Pawl Lever Pin	8HS-56
220	1	Treadle Spring Lever	S38-34
221	1	Spring Lever Pin	8HS-58
222	1	Foot Treadle Shaft	S50S-88
223	1	Foot Treadle Lever	S38-32
223A	1	Foot Treadle Arm	S38-33
224	1	Treadle Spring Eyebolt	8GS-97
225	1	Treadle Spring Guide Bracket	8HS-57
226	1	Treadle Spring	B-28
227	1	Motor Base Bracket	S38S-25
228	1	Motor Base Pivot Shaft	S38S-26
229	2	Tru-Arc Lock Rings	5100-175
230	1	Motor Base	S50S-68
231	1	Motor - 20 HP, 1800 RPM	324 U Frame
232	1	Motor Pulley, 3 Grooves, 11" P.D. Belt Guard	S50S-70
234	3	V-Belts	C-120

RUN CREEP POWER BACK GAUGE ASSEMBLY (36" RANGE) FOR NO. 1250
(See Figure 5)

<u>ITEM NO.</u>	<u>QUANTITY</u>	<u>NAME OF PART</u>	<u>PART NUMBER</u>
250	1	Back Gauge Stop	S50S-104
251	2	Slides	G38-12
252	1	Shoulder Screw, Right-End	G38S-4
253	1	Shoulder Screw, Left-Hand	G38S-4
254	1	Rail Bushing	G38S-6
255	2	Slide Extensions	G38S-15
256	4	Slide Gibs	G38S-16
258	2	Driving Nuts (2 each)	G38-6 & 7
259	1	Back Gauge Driving Screw, Left-Hand	G38S-1
	1	Back Gauge Driving Screw, Right-Hand	BGS-97
260	2	Woodruff Keys	
261A	2	Screw Spacing Collars	7HS-249
262	2	Thrust Bearings	G-18
262A	2	Bearing Spacers	7HS-248
264	2	Rails	G38-1
264A	2	Screw Bushings	G38-8
265	2	Bearings	6208-2RS
266	2	Gauge Screw Miter Gears	7HS-257
267	2	Nuts	1/2" -20
278	1	Bearing	6206-2RS
278A	1	Bearing Spacer	BGS-58
279	1	Right-Hand Gear Housing	BG-62
279A	2	Gear Housing Covers	7H-255
280	1	Horizontal Miter Gear	7HS-256
282	1	Bearing	6208-2RS
283	1	Bearing Spacer	7HS-577
284	3	Woodruff Keys	
285	1	Horizontal Drive Shaft (Short)	BGS-66
286	1	Locking Ring	7HS-479
287	1	Clutch Drum (Inside)	7H-260
288	1	Clutch Shoe (Outside)	7H-296
289	1	Horizontal Drive Shaft (Long)	7HS-432
290	1	Key	
291	1	Left-Hand Gear Housing Cap	7H-257
292	1	Bearing	6205-2RS
293	1	Left-Hand Gear Housing	7H-256
294	1	Horizontal Miter Gear	BGS-61
295	1	Coupling	BGS-85
296	1	Miter Gear Shaft	BGS-36
297	1	Collar	BGS-33
298	2	Bearings	B-1412
299	2	Bearings	IR-1012
300	1	Sleeve	BGS-12
301	1	Front Drive Housing	BG-40
302	1	Thrust Bearing	F-1

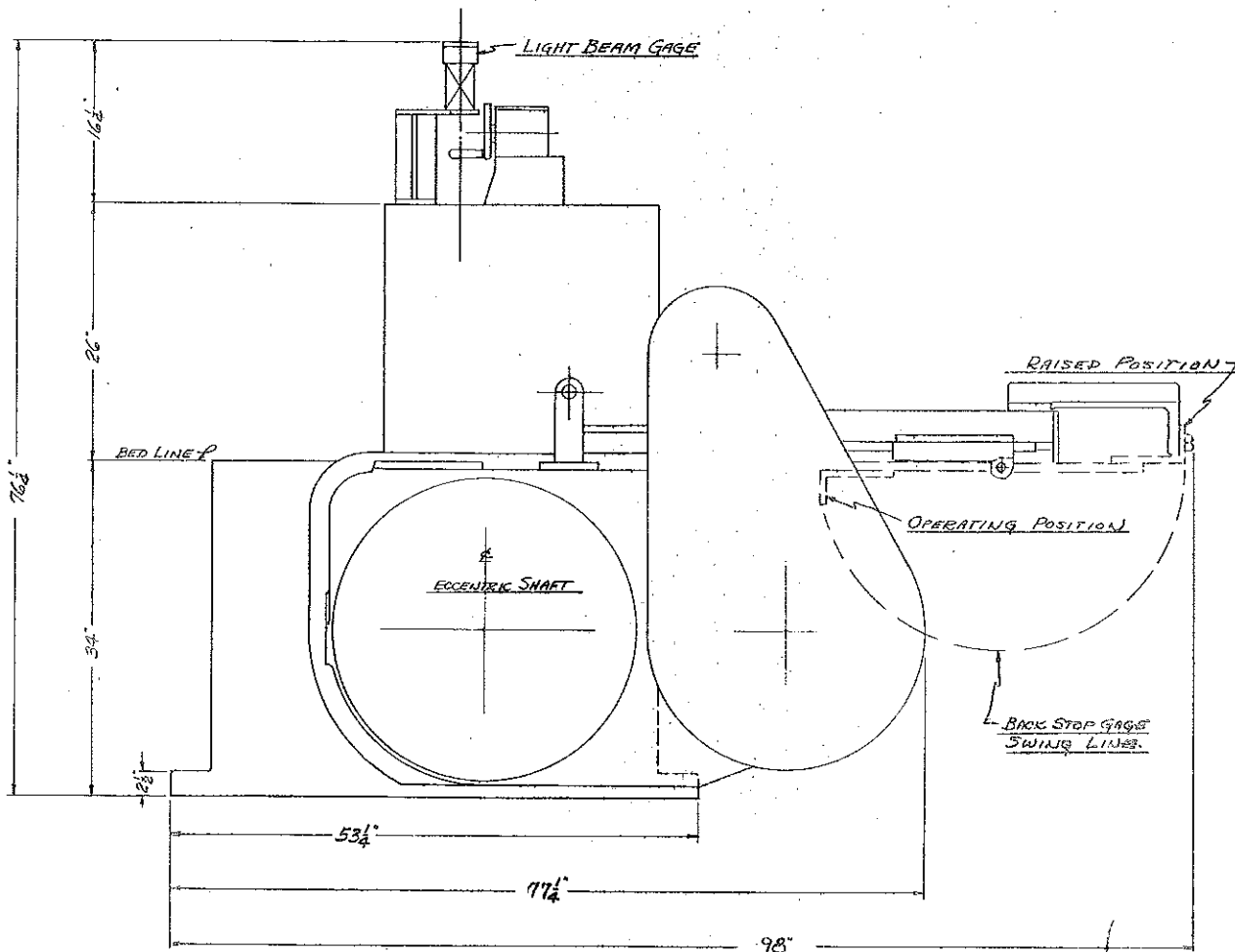
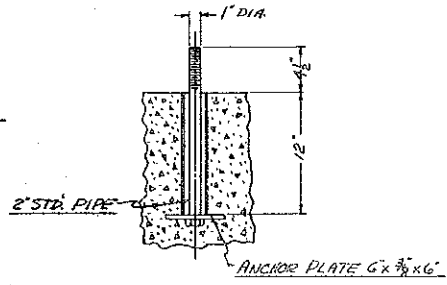
RUN CREEP POWER BACK GAUGE ASSEMBLY (36" RANGE) FOR NO. 1250
(See Figure 5)

<u>ITEM NO.</u>	<u>QUANTITY</u>	<u>NAME OF PART</u>	<u>PART NUMBER</u>
303	1	Screw Miter Gear	L-101-Y
304	1	Miter Gear	BGS-57
305	1	Motor-Frame U56 Dina Brake	Type PA
306	1	Motor Base	BG-63
321	1	Measuring Box Dial Cover	Plexiglass
322	1	Measuring Box	BG-32
326		Not Required	
328		Not Required	
328A	1	Timing Sprocket Type 6F 5/8 Bore	Mores 14L100
328B	1	Timing Belt	Morse 322L100
328C	1	Rod Support Bearing Block	BGS-228
328D	1	Bearing Block	BGS-210
328E	1	Timing Sprocket Type 3F	Morse TL28L100
328F	1	Taperlock Bushing 5/8 Bore	Morse TL 1610
328G	1	Water Pump Bearing	ND 885158D
328H	1	Belt Cover	BGS-241
329	2	Universal Joints Pulley End Lower	BGS-213 BGS-29
335	1	Miter Gear	G465
336	1	Veeder Root Unit	113023
338	1	Clamping Plate	BGS-79
339	1	Measuring Box Cover	BG-33
343	1	Gear Box Cover	BG-10
344A	1	Pinion Gear	BGS-34
344B	1	Thrust Washer	BGS-49
345	1	Gear Box	BG-19
346A	1	Bearing Spacer	BGS-28
347	2	Bearings	B-1616
348	2	Needle Bearings	IR-1216
349	1	Washer	BGS-49
350A	1	Pinion Shaft	BGS-35
351	1	Universal Drive Shaft 3/4 Dia. x25-5/8	BGS-237
352	1	Plate	BG-7
353	1	Washer	BG-6
354	1	Bevel Gear	BGS-19
355	1	Thrust Washer	BGS-30
356	1	Spacer	BGS-59
357	1	Thrust Washer	BGS-30
358	1	Collar	BGS-82
359	1	Worm Gear	BG-29
360	1	Collar	BGS-82
361	1	Bushing	B812-4
362	1	Bushing	B812-4
363	1	Limit Control Shaft	BGS-80
364	1	Limit Control Drum	BGS-48
365	2	Limit Control Springs	BGS-45

RUN CREEP POWER BACK GAUGE ASSEMBLY (36" RANGE) FOR NO. 1250
(See Figure 5)

<u>ITEM NO.</u>	<u>QUANTITY</u>	<u>NAME OF PART</u>	<u>PART NUMBER</u>
366	1	Micro Switch	WZ-2R-A2
367	1	Micro Switch	WZ-2R-A2
368	1	Measuring Box Rear Cover	BG-34
369	1	Drive Gear Shaft	BGS-130
370	1	Collar	5/8"
371	1	Bushing	B-1013-4
372	1	Thrust Washer	BGS-38
373	1	Drive Gear	BGS-77
374	1	Bushing	B-1418-6
375	1	Bushing	B-48-4
376	1	Collar	BGS-82
377	1	Worm	HLUH
378	1	Driven Gear	BG-28
379	1	Bushing	B48-4
380	1	Counter Shaft	BGS-78
381	1	Counter Shaft	BGS-78
382	1	Bushing	B-48-4
383	2	Thrust Washers	BGS-81
384	1	Driven Gear	BG-28
385	1	Gear	B465
387	2	Thrust Washers	BGS-81
389	1	Bushing	B-48-4
386	1	Collar	1/4"

NOTE -
FOUNDATION HOLES ARE CORED AND
ARE THEREFORE APPROXIMATE
SEE SKETCH FOR METHOD OF
SETTING ANCHOR BOLTS.



MACHINE MODEL	DRAWN	GRG	T-1061
No. 1250	CHK'D		
SWAGE	SCALE		
WYSONG & MILES CO.			
GREENSBORO, N. C.			