

WYSONG AND MILES COMPANY
625 FULTON STREET
GREENSBORO, NORTH CAROLINA

PARTS LIST AND ILLUSTRATIONS

POWER SQUARING SHEAR NO. 1496

When ordering parts, please refer to the Item Number, Quantity, Name of Part, Part Number, and also Serial Number of your machine. The serial number will be found stenciled on the table outside the right-hand side gauge.

February 1965

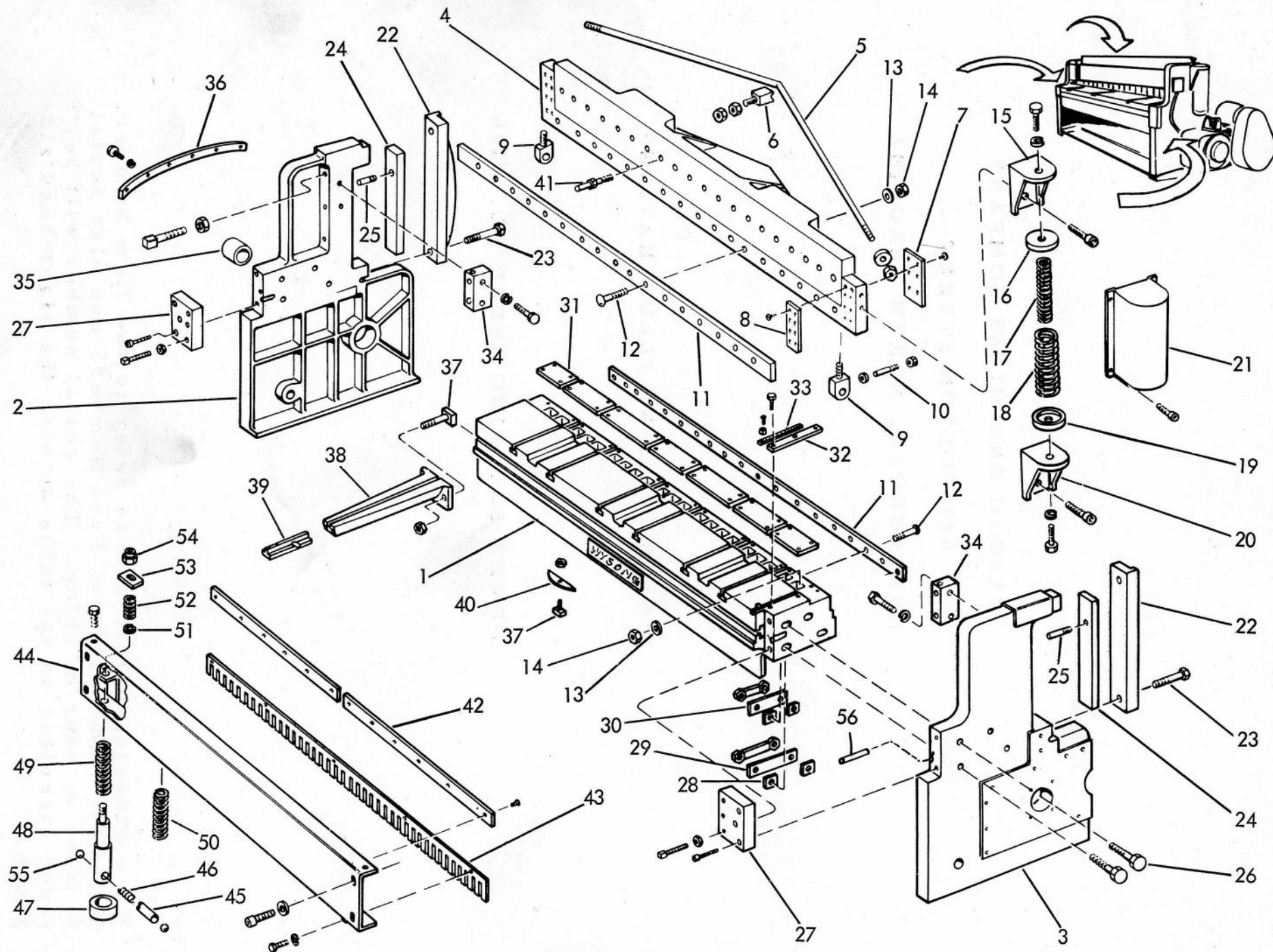


FIG. 1 TABLE - END HOUSINGS - FOLD DOWN - KNIFE BAR ASSEMBLY

TABLE-END HOUSINGS-HOLDDOWN KNIFE BAR ASSEMBLY-1496

(See Figure 1)

<u>ITEM NO.</u>	<u>QUANTITY</u>	<u>NAME OF PART</u>	<u>PART NUMBER</u>
1	1	Table	7X-14
2	1	L. H. End Housing	S12-37
3	1	R. H. End Housing	S12-38
4	1	Knife Bar	7X-2
5	1	Tension Rod	7XS-5
6	1	Tension Rod Stud	7JS-31
7	2	Rear Gibs (Non-Metallic)	MG-4
8	2	Front Gibs (Non-Metallic)	MG-3
9	2	Eyebolts	S10S-145
10	2	Eyebolt Locking Pins	8GS-107
11	2	Blades	3" x 1" x 98"
12	34	Blade Bolts	5/8" x 3"
13	34	Blade Bolt Washers	5/8"
14	34	Blade Bolt Nuts	5/8"
15	2	Top Spring Brackets	7X-15
16	2	Spring Seats	8B-19
17	Not Required	Counterbalance Springs (Inside)	
18	2	Counterbalance Springs (Outside)	B- 64 69
19	2	Spring Seats	8B-19
20	2	Bottom Spring Brackets	7X-16
21	2	Spring Guards	7TS-30
22	2	Knife Bar Gibs	7X-17
23	4	Knife Bar Gib Bolts	7/8" x 3"
		Hex Head	
24	2	Take-Up Gibs	7HS-8
25	2	Take-Up Gib Locating Studs	7HS-82
26	8	Table Bolts	7/8" x 5-1/2"
27	2	Table Adjusting Lugs	S12-27
28	8	Table Washers	S12S-75
29	2	Table Bolt Locking Plates	S12S-37
30	2	Table Bolt Locking Plates	S12S-38
31	1	Table Plate	7XS-29
32	2	Side Gauges	SGS-3
33		Table Scales	
34	2	Mounting Lugs - Right and Left	7SS-16
35	1	Eccentric Shaft Bushing	S12-39
36	1	Oil Deflector	8BS-32
37	1	T-Bolt with Nut and Washer	6ES-45
38	2	Table Extensions	7K-61
39	2	Disappearing Stops	S12S-55A
40	1	Angle Gauge	5Y-66
41	24	Holddown Pin Lifting Lugs	7SS-52
42	1	Guide Strip	7XS-25
43	1	Finger Guard	7XS-17
44	1	Holddown	7XS-24
45	12	Ball Sleeves	7SS-96

TABLE-END HOUSINGS-HOLDDOWN KNIFE BAR ASSEMBLY-1496 (CONT.)

(See Figure 1)

<u>ITEM NO.</u>	<u>QUANTITY</u>	<u>NAME OF PART</u>	<u>PART NUMBER</u>
46	12	Sleeve Springs	B-114
47	12	Holddown Feet	7SS-94
48	12	Holddown Pins	7SS-93
49	4	Holddown Pressure Springs (2 ea. end)	B-101
50	8	Holddown Pressure Springs (Center)	B-74
51	12	Truarc Locks	5100-87
52	12	Lifting Lug Springs	B-106
53	12	Lifting Lugs	7SS-21
54	12	Flexloc Nuts	5/8"-11
55	24	Steel Balls	3/8" dia.
56	2	Dowel Pins	7ES-106

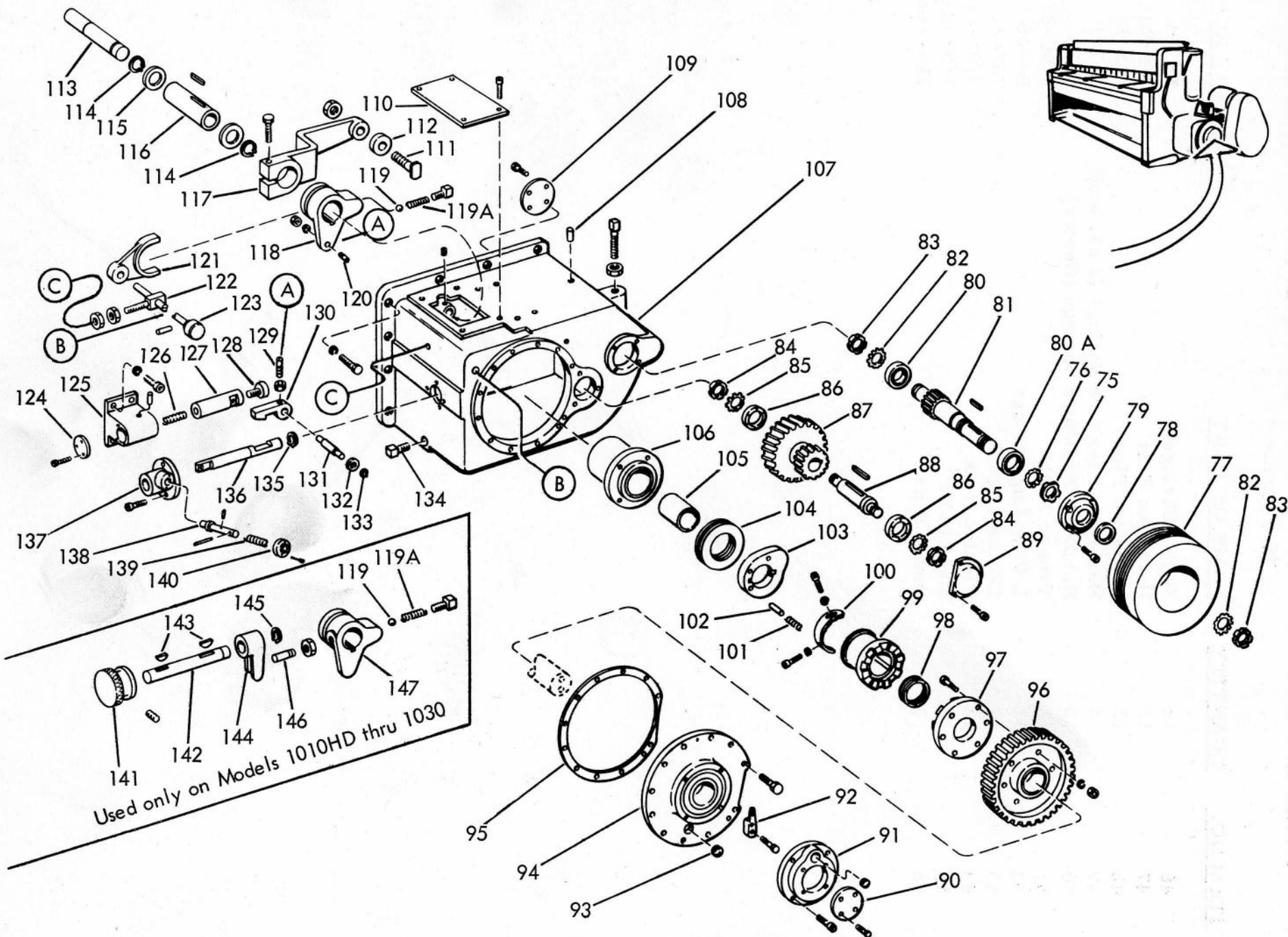


FIG. 2 GEAR CASE ASSEMBLY

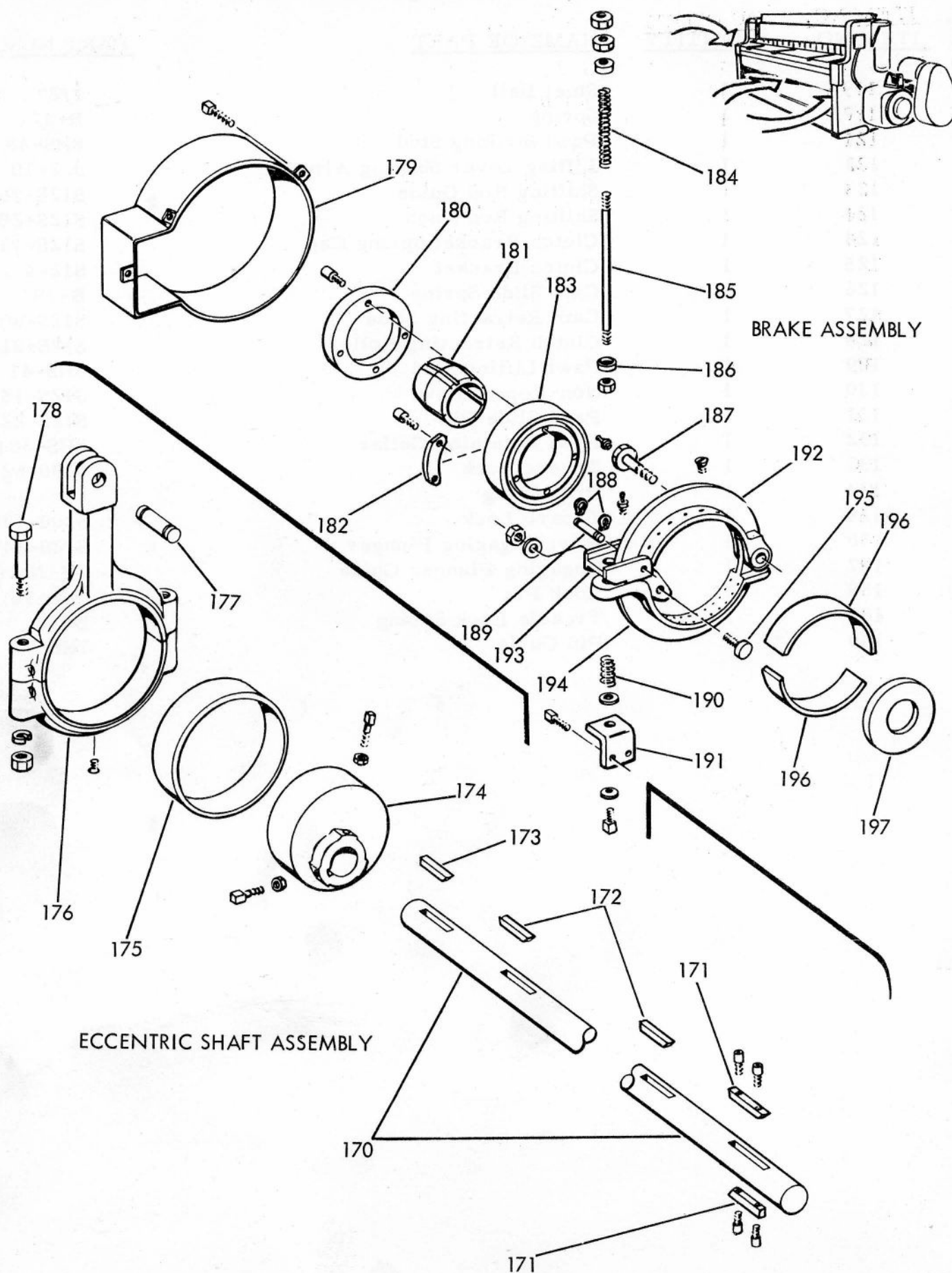
GEAR CASE ASSEMBLY - 1496

(See Figure 2)

<u>ITEM NO.</u>	<u>QUANTITY</u>	<u>NAME OF PART</u>	<u>PART NUMBER</u>
75	1	Lock Nut	N-10
76	1	Lock Washer	W-10
77	1	Flywheel	S12-30
78	1	Pinion Shaft Seal	60730
79	1	Pinion Shaft Bearing Cap	S12-5
80	1	Bearing	SKS-6208
80A	1	Bearing	SKF-6210
81	1	Pinion Shaft	S12S-11
82	2	Lock Washers	W-08
83	2	Lock Nuts	N-08
84	2	Lock Nuts	N-07
85	2	Lock Washers	W-07
86	2	Bearings	5207
87	1	Intermediate Gear	S12S-10
88	1	Intermediate Shaft	S12S-43
89	1	Intermediate Shaft Bearing Cap	S12-31
90	1	Housing Indicator Cover	8G-105
91	1	Top Center Indicator Housing	8G-41
92	1	Top Center Indicator	8G-42
93	1	Oil Level Gauge	
94	1	Gear Case Cover	S12-1
95	1	Gear Case Cover Gasket	
96	1	Bull Gear	S12S-1
97	1	Clutch Drive Plate	S12S-54
98	1	Bull Gear Spacing Collar	S12S-52
99	1	Clutch Driven Plate	S12S-3
100	1	Clutch Release Cam	S12S-51
101	4	Clutch Springs	B-70
102	4	Clutch Spring Studs	S12S-9
103	1	Non-Repeat Cam	S12-15
104	1	Thrust Bearing	G-41
105	1	Bearing Bushing	S12-14
106	1	Eccentric Shaft Bearing	S12-13
107	1	Gear Case	S12-16
108	1	Air Vent	G-304810
109	1	Gear Case Rear Cover	S12-17
110	1	Gear Case Hand Cover	S12-7
111	1	Non-Repeat Roller Stud	7KS-39
112	1	Non-Repeat Arm Roller	7KS-41
113	1	Non-Repeat Arm Pivot Shaft	S12S-17
114	2	Truarc Lock Rings	5100-100
115	2	Sleeve Retaining Collars	8HS-45
116	1	Non-Repeat Arm Sleeve	S12S-19
117	1	Non-Repeat Arm	S12-8
118	1	Non-Repeat Pawl Lifting Lever	S12-9

GEAR CASE ASSEMBLY (Cont.) - 1496
(See Figure 2)

<u>ITEM NO.</u>	<u>QUANTITY</u>	<u>NAME OF PART</u>	<u>PART NUMBER</u>
119	1	Steel Ball	1/2"
119A	1	Spring	B-37
120	1	Pawl Striking Stud	8HS-48
121	1	Lifting Lever Shifting Arm	S12-10
122	1	Shifting Rod Guide	S12S-16
123	1	Shifting Rod Knob	S12S-28
124	1	Clutch Bracket Spring Cap	S12S-13
125	1	Clutch Bracket	S12-4
126	1	Cam Slide Spring	B-19
127	1	Cam Retracting Slide	S12S-80
128	1	Clutch Retracting Roller	S12S-81
129	1	Pawl Lifting Stud	8HS-41
130	1	Non-Repeat Pawl	S12S-15
131	1	Pawl Slide Pin	S12S-22
132	1	Pawl Retaining Collar	8HS-38
133	1	Truarc Lock	5100-62
134	1	Drain Plug	
135	1	Truarc Lock	5100-100
136	1	Pawl Engaging Plunger	S12S-14
137	1	Engaging Plunger Guide	7Y-20
138	1	Lock Pin	7KS-96
139	1	Treadle Lock Spring	B-58
140	1	Pin Guide	7KS-97



ECCENTRIC SHAFT AND BRAKE ASSEMBLY - 1496
(See Figure 3)

<u>ITEM NO.</u>	<u>QUANTITY</u>	<u>NAME OF PART</u>	<u>PART NUMBER</u>
170	1	Eccentric Shaft	S12S-29
171	2	Clutch Driving Keys	S12S-20
172	2	Eccentric Keys	S12S-35
173	1	Clamping Sleeve Key	
174	2	Eccentrics	S12-20
175	2	Eccentric Strap Bushings	S10-90
176	2	Eccentric Straps	S10-88 & 99
177	2	Connection End Pins	S10S-147
178	4	Eccentric Strap Bolts	
179	1	Brake Cover	S10S-142
180	1	Clamping Sleeve Collar	S10S-70
181	1	Brake Drum Clamping Sleeve	S12S-78
182	1	Brake Cam	S10S-68
183	1	Brake Drum	S10-67
184	1	Brake Springs	B-21
185	1	Spring Stud	S10S-76
186	2	Spring Stud Washers	8HS-102
187	1	Brake Pivot Stud	S10S-69
188	2	Truarc Locks	5100-87
189	1	Brake Arm Pivot Stud	S10S-75
190	1	Spring	B-2
191	1	Male Brake Shoe Stop	8HS-104
192	1	Female Brake Shoe	S10-41
193	1	Brake Cam Plate	S10S-72
194	1	Male Brake Shoe	S10-42
195	1	Cam Follower	CF-1-3/4
196	2	Brake Linings	1/4" x 2" x 13-1/2"
197	1	Oil Seal	60987

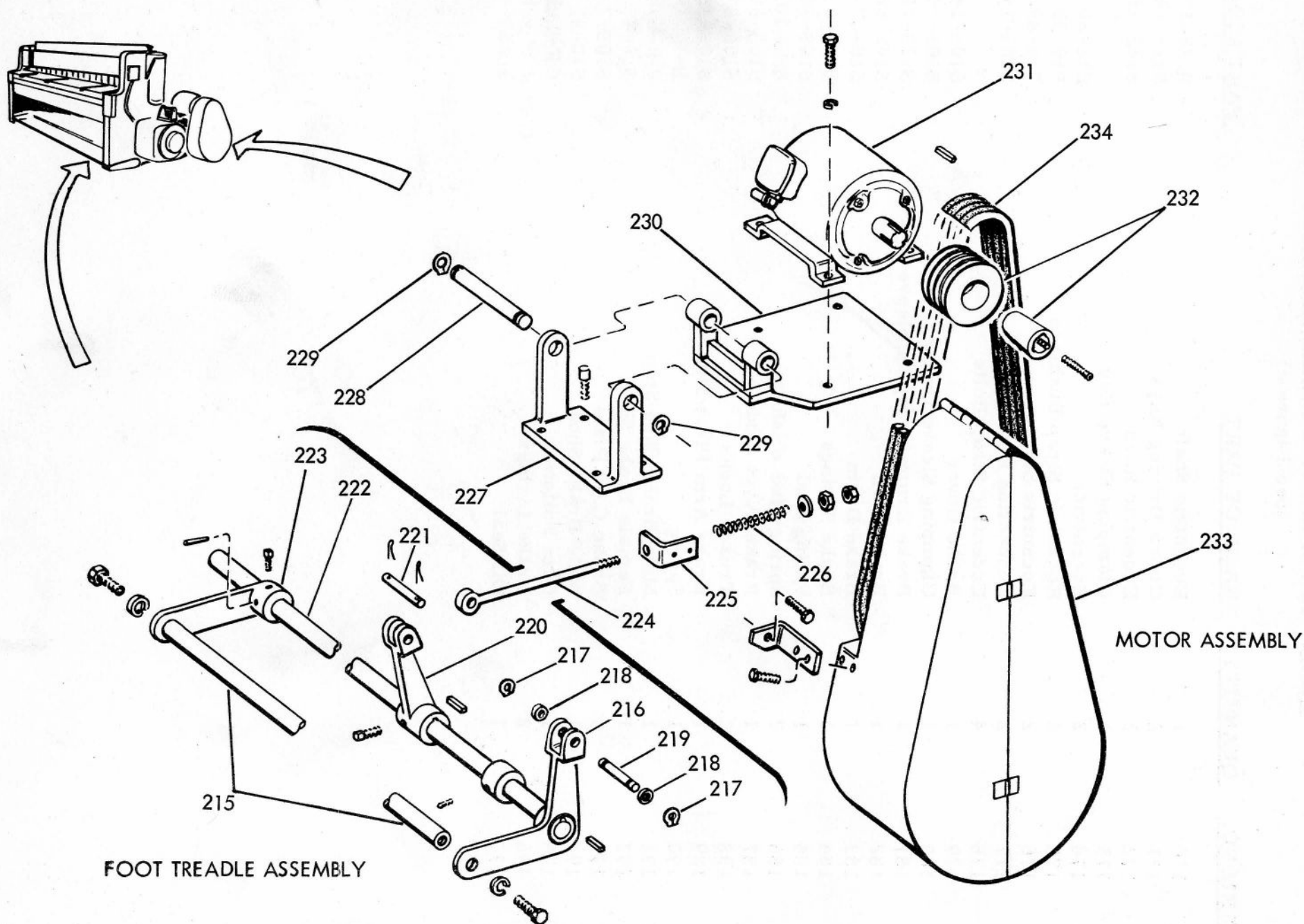


FIG. 4 FOOT TREADLE ASSEMBLY - MOTOR ASSEMBLY

FOOT TREADLE AND MOTOR ASSEMBLY - 1496

(See Figure 4)

<u>ITEM NO.</u>	<u>QUANTITY</u>	<u>NAME OF PART</u>	<u>PART NUMBER</u>
215	1	Foot Treadle	S12S-30
216	1	Clutch Pawl Lever	S12-23
217	2	Truarc Locks	5100-62
218	2	Pin Washers	8HS-59
219	1	Pawl Lever Stud	8HS-56
220	1	Treadle Spring Lever	S12-22
221	1	Spring Lever Pin	8HS-58
222	1	Foot Treadle Shaft	S12S-31
223	1	Foot Treadle Lever	7K-73
224	1	Treadle Spring Eyebolt	7KS-51
225	1	Treadle Spring Guide Bracket	7KS-99
226	1	Treadle Spring	B-28
227	1	Motor Bracket	S12S-27
228	1	Motor Base Pivot Shaft	S12S-26
229	2	Truarc Locks	5100-100
230	1	Motor Base	S12S-42
231	1	Motor - 3 HP, 1800 RPM	213 Frame
232	1	Motor Pulley, 3 Grooves, 3.6 P.D.	
233	1	Belt Guard	S12S-53
234	3	V-Belts	A-55

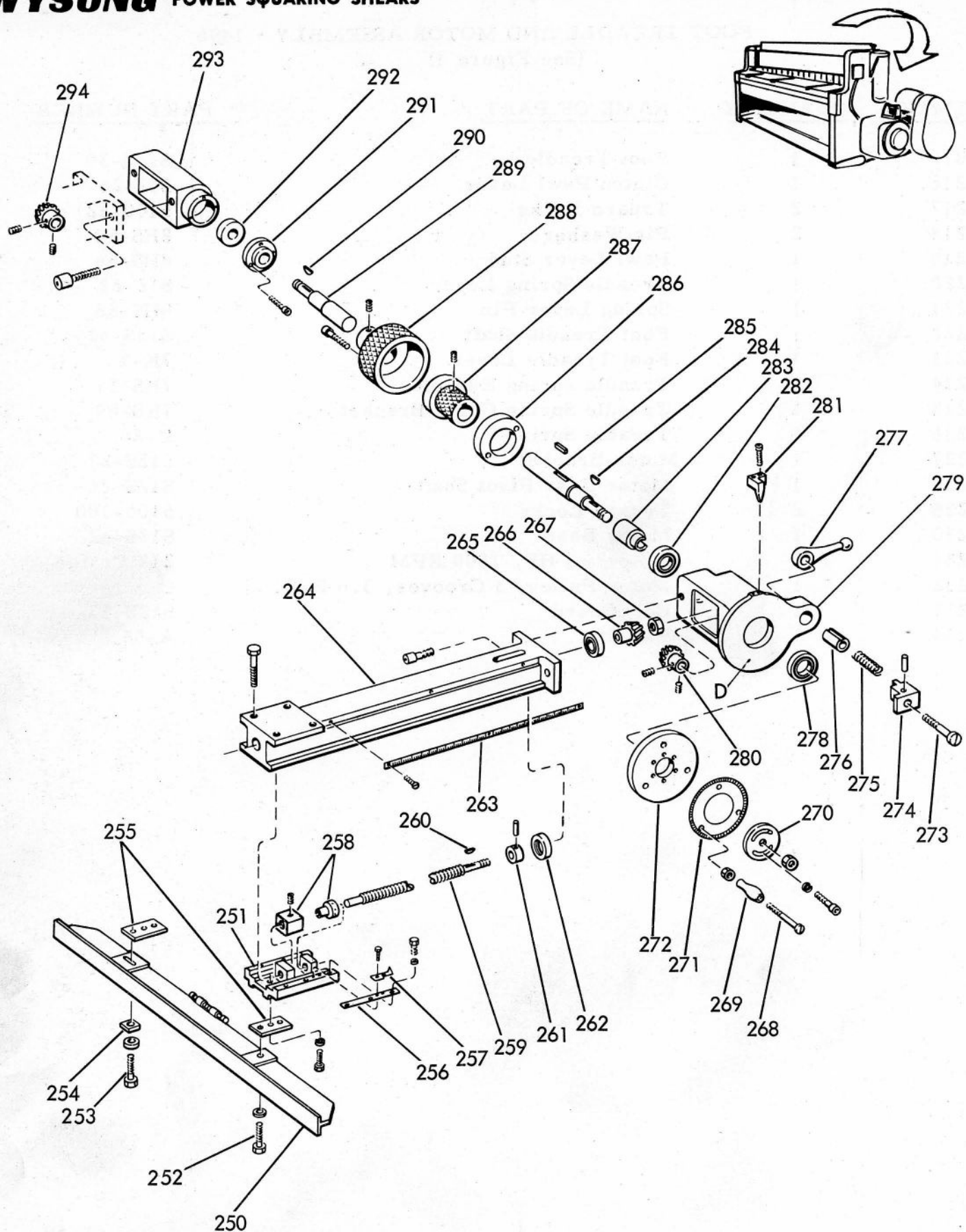


FIG. 5 BACK GAUGE ASSEMBLY

REAR OPERATED BACK GAUGE ASSEMBLY - 1496

(See Figure 5)

<u>ITEM NO.</u>	<u>QUANTITY</u>	<u>NAME OF PART</u>	<u>PART NUMBER</u>
250	1	Back Gauge Stop	7HS-181
251	2	Slides	7H-172
252	1	Shoulder Screw	7HS-170
253	1	Shoulder Screw	7HS-170
254	1	Rail Bushing	7HS-171
255	2	Slide Extensions	7HS-466
256	4	Slide Gibs	7HS-105
257	1	Back Gauge Indicator	7H-202
258	2	Driving Nuts	7H-200 and 201
259	2	Slide Screws	7HS-160
260	2	Keys	3/16 x 3/32
261	2	Screw Thrust Collars	7HS-112
262	2	Thrust Bearings	Aetna F-5-3/4
263	1	Scale	7HS-103
264	2	Rails	7H-174
265	2	Bearings	ND 88503
266	2	Screw Miter Gears	7HS-113
267	2	Nuts	3/8 Std.
268	1	Stud for Handle	7HS-107A
269	1	Handle	7HS-107
270	1	Dial Adjusting Plate	7HS-122
271	1	Measuring Dial	7HS-455
272	1	Dial	7H-405
273	1	Clamp Stud	7HS-545
274	1	Clamp Block	7HS-544
275	1	Spring	B-9
276	1	Locking Block	7HS-547
277	1	Locking Handle	7HS-546
278	1	Bearing	SKF6206-2RS
279	1	Right-Hand Gear Housing	7H-431
280	1	Horizontal Miter Gear	7HS-114
281	1	Pointer	7H-408
282	1	Bearing	ND 88504
283	1	Bearing Spacer	7HS-576
284	1	Woodruff Key	808
285	1	Horizontal Drive Shaft	7HS-595
286	1	Locking Ring	7HS-484
287	1	Clutch Drum	7HS-168
288	1	Clutch Shoe	7H-275
289	1	Horizontal Shaft	7HS-189
290	1	Woodruff Key	808
291	1	Left-Hand Gear Housing Cap	7HS-247
292	1	Bearing	ND-88504
293	1	Left-Hand Gear Housing	7H-417
294	1	Horizontal Miter Gear	7HS-115

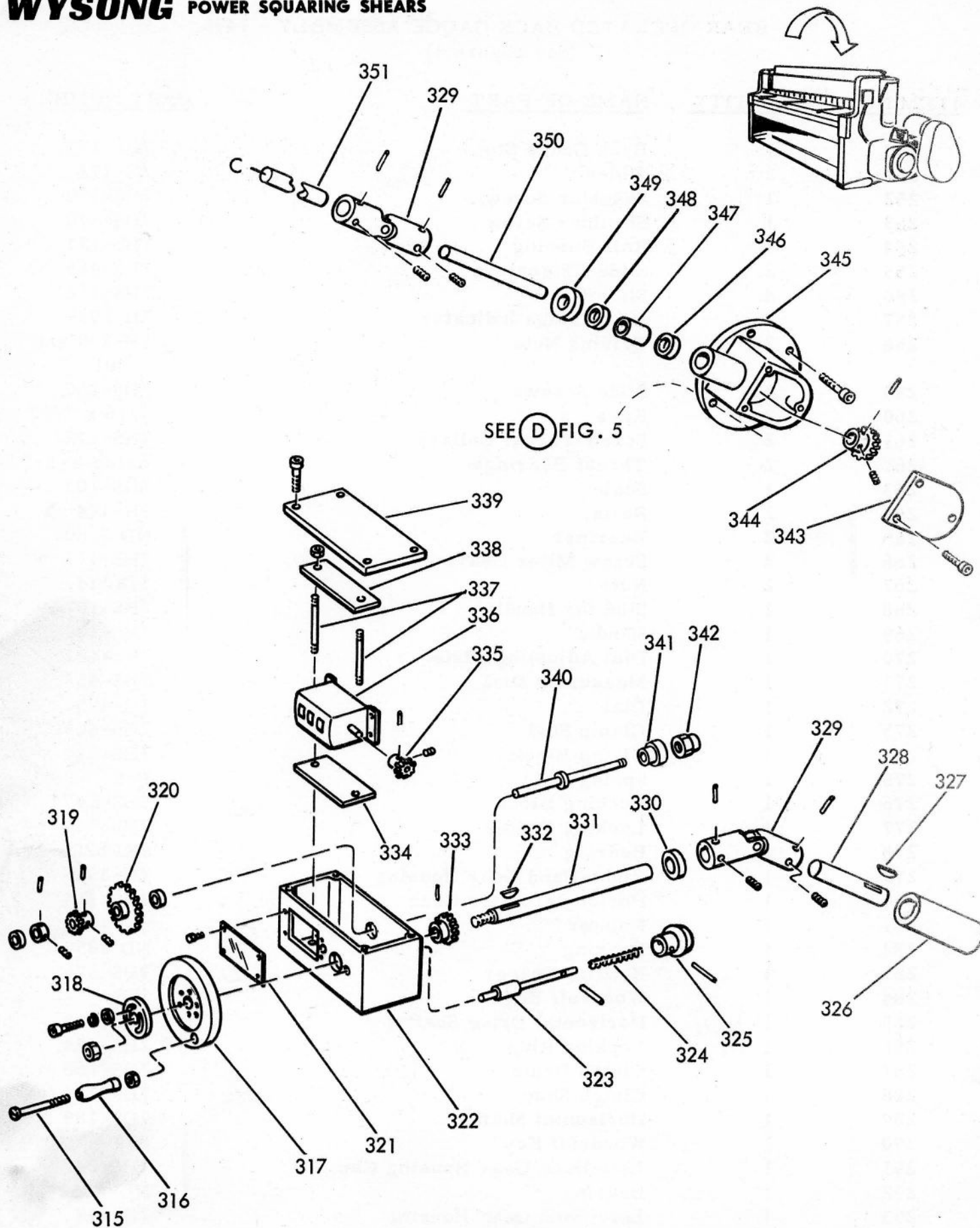
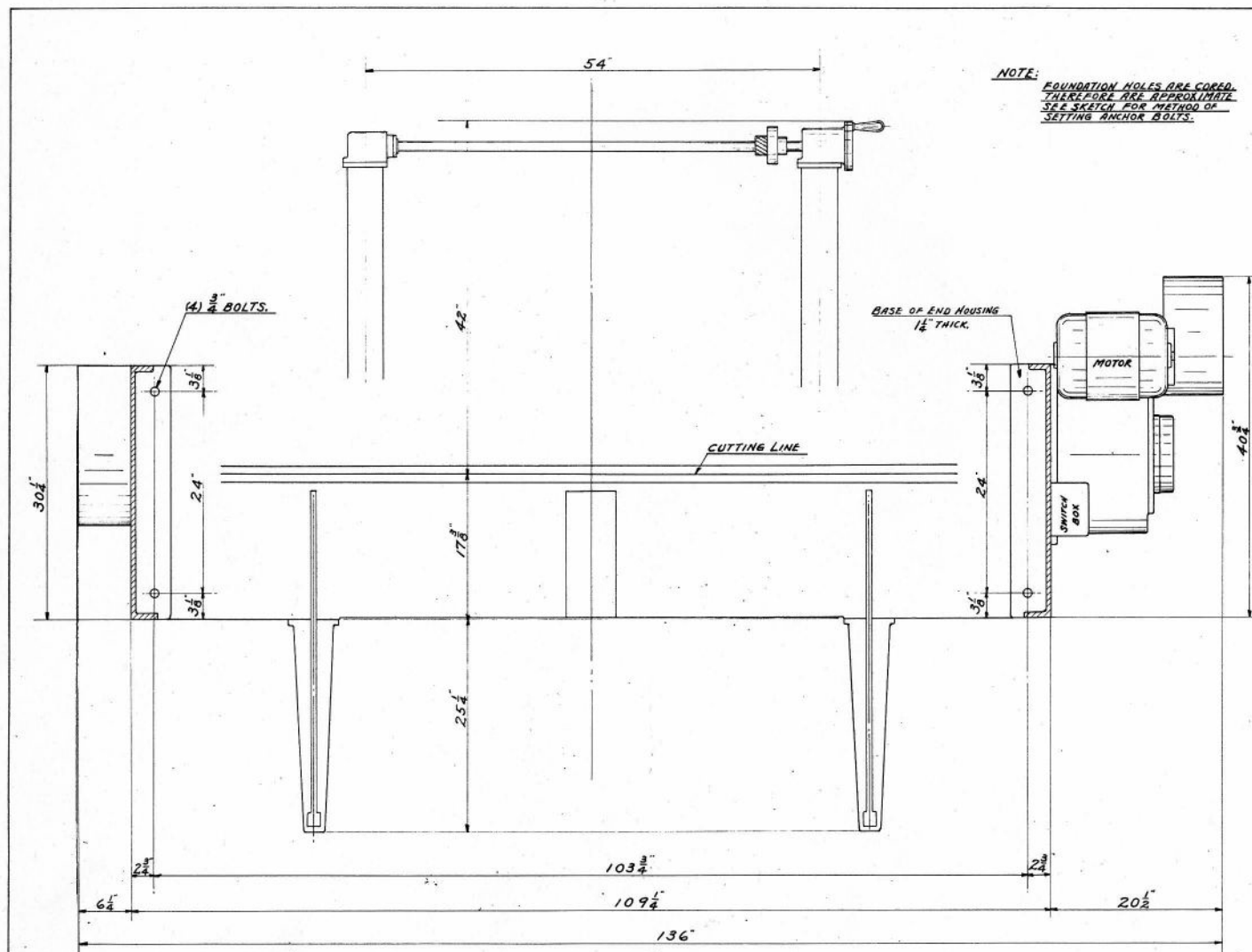


FIG. 6 FRONT - BACK GAUGE ASSEMBLY

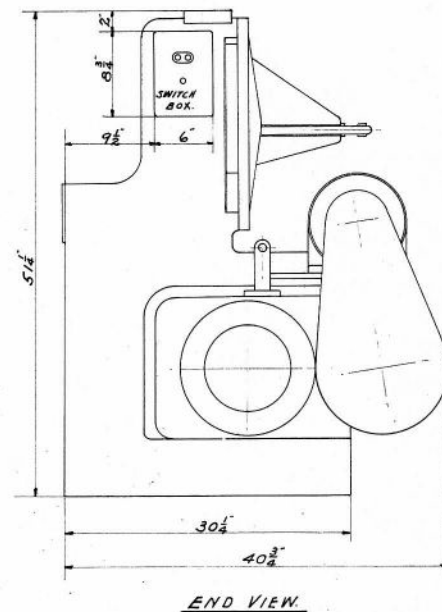
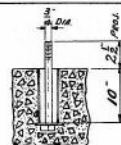
FRONT BACK GAUGE ASSEMBLY (OPTIONAL)
(See Figure 6)

<u>ITEM NO.</u>	<u>QUANTITY</u>	<u>NAME OF PART</u>	<u>PART NUMBER</u>
315	1	Stud for Handle	7HS-107A
316	1	Handle	7HS-107
317	1	Dial	7H-108
318	1	Dial Adjusting Plate	7HS-122
319	1	Miter Gear	7HS-324
320	1	Driven Gear	7HS-327
321	1	Measuring Box Dial Cover	7HS-332
322	1	Measuring Box	7H-273
323	1	Locking Pin	7HS-291
324	2	Springs	B-37
325	1	Locking Pin Handle	7HS-109
326	1	Drive Shaft Coupling	7HS-431
327	1	Woodruff Key	606
328	1	Upper Drive Shaft	7HS-144
329	2	Universal Joints	HTD-20-B
330	1	Collar	15/16" ID
331	1	Measuring Box Shaft	7HS-292
332	1	Woodruff Key	606
333	1	Drive Gear	7HS-328
334	1	Base for Veeder Root Unit	Rubber
335	1	Miter Gear	7HS-324
336	1	Veeder Roof Unit	A-113033
337	2	Clamping Studs	7HS-329
338	1	Clamping Plate	7HS-330
339	1	Measuring Box Cover	7H-274
340	1	Driven Shaft	7HS-430
341	1	Adjusting Nut	7HS-429
342	1	Flex-Loc Nut	3/8"
343	1	Miter Gear Housing Cover	7H-127
344	1	Miter Gear	7HS-114
345	1	Miter Gear Housing	7H-133
346	1	Needle Bearing	BR-1012
347	1	Bearing Spacer	7HS-262
348	1	Needle Bearing	BR-1012
349	1	Collar	7HS-520
350	1	Miter Gear Shaft	7HS-133
351	1	Universal Drive Shaft	5/8" OD



NOTE:
 FOUNDATION HOLES ARE CORED.
 THEREFORE ARE APPROXIMATE.
 SEE SKETCH FOR METHOD OF
 SETTING ANCHOR BOLTS.

INSERT 2" PIPE ON
 CENTERS AS SHOWN
 BEFORE POURING
 CONCRETE.



INSTRUCTIONS FOR INSTALLATION AND MAINTENANCE OF
WYSONG AND MILES NO. 1496 POWER SQUARING SHEAR

Each machine before leaving our plant has been thoroughly tested and adjusted, and when set in place as specified below and current connected, it is ready for operation without further adjustment. On arrival, machine should be carefully checked to determine whether any parts have been damaged in transit. Clean machine thoroughly, removing the protective coating of grease from steel parts.

INSTALLATION OF MACHINE: The shear must be set level both longitudinally and horizontally, and should be bolted to the foundation. Before starting the machine, see that the motor is properly wired and that the flywheel runs counterclockwise when standing at the end of the machine facing the flywheel. Next - jog the knife bar down by means of the start and stop push button, making sure that the clutch pedal is depressed. As the knife bar descends, check to be sure that the knives clear each other. Now apply current to the machine and let it run a few minutes before making a cutting stroke.

LUBRICATION: Grease fittings are provided at each point requiring lubrication (see front and rear views for locations of fittings). The machine should be kept well lubricated at all times. A light grease should be used in grease fittings for the clutch. A heavy grease will not allow the clutch to function properly. Be sure to thoroughly lubricate the flywheel bearing. Apply grease until it can be seen between flywheel and end housing.

ADJUSTMENT OF KNIVES: The knives on this machine are set with a clearance of .003" to .004". This should take care of the knife setting for any gauge of mild steel within range of the shear. General practice is to set the clearance for the lightest sheet to be cut. When shearing stainless, copper, brass and aluminum, .002" clearance should be used. The upper knife is permanently set against a shoulder on the knife bar with a series of key-headed bolts, which need no adjustment except to be kept tight at all times. The lower knife or bed knife is set level with the bed on a machined ledge on which the knife rests and will require shimming after knives have been removed for grinding. Upon re-installation of the knife after grinding, shims should be placed under the knife to compensate for the amount of material that has been removed in the sharpening process. The cutting edge of the knife should be level with the top surface of the bed and all cap screws holding the knife to the bed must be securely tightened. Adjustment of the clearance of the knives is accomplished by a set screw and cap screw in adjusting brackets, located at the extreme ends of the front face of the bed. Before making adjustment of the knife clearance, six cap screws - three through each end of the bed into the legs - must be loosened. After adjustment of knife clearance, these cap screws must be pulled up TIGHT with a socket wrench. After tightening the six cap screws, check the knives for clearance with feeler gauge before starting the machine. Knives should be kept ground and free of nicks and gaps to produce best results. The shear is equipped with four-edge blades, and blades can be reversed when one edge becomes dull.

KNIFE-BAR: The knife bar is a sturdy one-piece, high tensile casting. It has a tension rod at the rear to maintain alignment through the length of the blade. The knife bar moves between gibbed ways. The rear gib is a close-grained casting, hand scraped, to fit the knife bar and should be kept well lubricated. The front gib is adjustable by means of set screws on each end of the knife bar just inside the end housing or frame. The purpose of this adjustment is to maintain the proper fit of the knife bar in its slides and also to keep the knife bar in alignment with the rear bearing plate or gib. After approximately thirty days of operation, these adjustment screws should be tightened to compensate for "wearing in" of knife bar and gibs. Check this adjustment frequently to prevent machine from running loose. Too much take-up on these gibs will cause heating and excessive wear. Be certain that the machine is level when this adjustment is made.

ECCENTRIC STRAP: The eccentric strap should have sufficient clearance on the eccentric to allow the machine to run free without binding and without knocking on the bottom of the stroke. After approximately thirty days operation, these straps should be tightened to compensate for the "wearing in". This adjustment is accomplished by means of screws through the upper and lower half of the eccentric strap. Grease fittings are provided for proper lubrication of the eccentric strap and the eccentrics.

HOLDDOWN: The shear is equipped with a mechanical type holddown and greater pressure can be exerted by adjustment of the screws in the top of the guide pin on either end of the holddown.

CLUTCH MECHANISM: The shear is equipped with a sliding key type clutch. The entire clutch - every working part- is of hardened steel. When the foot treadle is depressed, the clutch finger is automatically raised, thereby allowing the clutch dog to engage in a milled slot in a plate attached to the bullgear. The clutch should be well lubricated with a light grease, a lubricant being applied to the end of the clutch finger and the slot in the clutch drum. There is also an oil slot in the top of the clutch dog.

BRAKE: The shear is equipped with a friction lined brake and **SHOULD NEVER BE OILED OR LUBRICATED!** This brake is mounted just to the left of the right hand eccentric and should be kept adjusted so that the knife bar will stop at top center after completing the stroke.

NON-REPEAT UNIT: The control knob of the non-repeat unit is located just inside the right hand end housing and below the bed. By pulling out the control knob and turning a half turn to the right, the clutch will be set for continuous operation as long as the foot treadle is depressed. When turning the control knob to the left the clutch will be set for single stroke operation. When set for single stroke operation and the foot treadle is depressed, the shear will make one cutting stroke and then stop, and the foot treadle must be depressed again before another cutting stroke can be made.

ACK GAUGE: The shear is equipped with a ball bearing precision back gauge. To zero the back gauge the following procedure should be followed:

(1) Use some convenient length - such as 6" or 12" - and set both ends of back stop angle this distance from knife. In setting the back stop angle, the dial should be unlocked.

(2) If the Dial does not read zero, loosen the dial through the adjustable flange inside the dial, and move the dial to zero. Lock the dial in place with the locking pin; then secure the flange by tightening the two cap screws in the dial.

Note: If the machine is equipped with a front operated ball bearing precision back gauge, the dial adjustment is the same as outlined above. In addition, the dial reading "inches" can be reset by loosening the nut on the bottom of the gear box and moving this dial to the desired setting and then re-tightening this unit. DO NOT OVER-TIGHTEN THIS NUT.

ORDERING REPAIR PARTS: When ordering repair parts, be sure to give this information:

1. Serial number of the shear (Located on right hand end of bed)
2. Part Number from enclosed parts list.
3. Complete description of part required.
4. Delivery required.

CAUTION:

1. The brake on this machine is equipped with a lined brake band, and must not be oiled.
2. Never adjust the back gauge up against the knife.
3. The knife bar gibs should be checked frequently in accordance with above instructions.
4. Keep shear blades sharp.
5. Maintain proper knife clearance.
6. Keep all bolts tight.
7. Use holddown on all pieces.
8. Never stop the machine until the cutting cycle has been completed - that is, while the clutch is engaged.
9. Machine should be regularly checked to see that it is level.
10. DO NOT OVERLOOK LUBRICATION! All points should be lubricated daily.

PARTS LIST FOR WYSONG & MILES
NO. 1496 POWER SQUARING SHEAR

Casting List

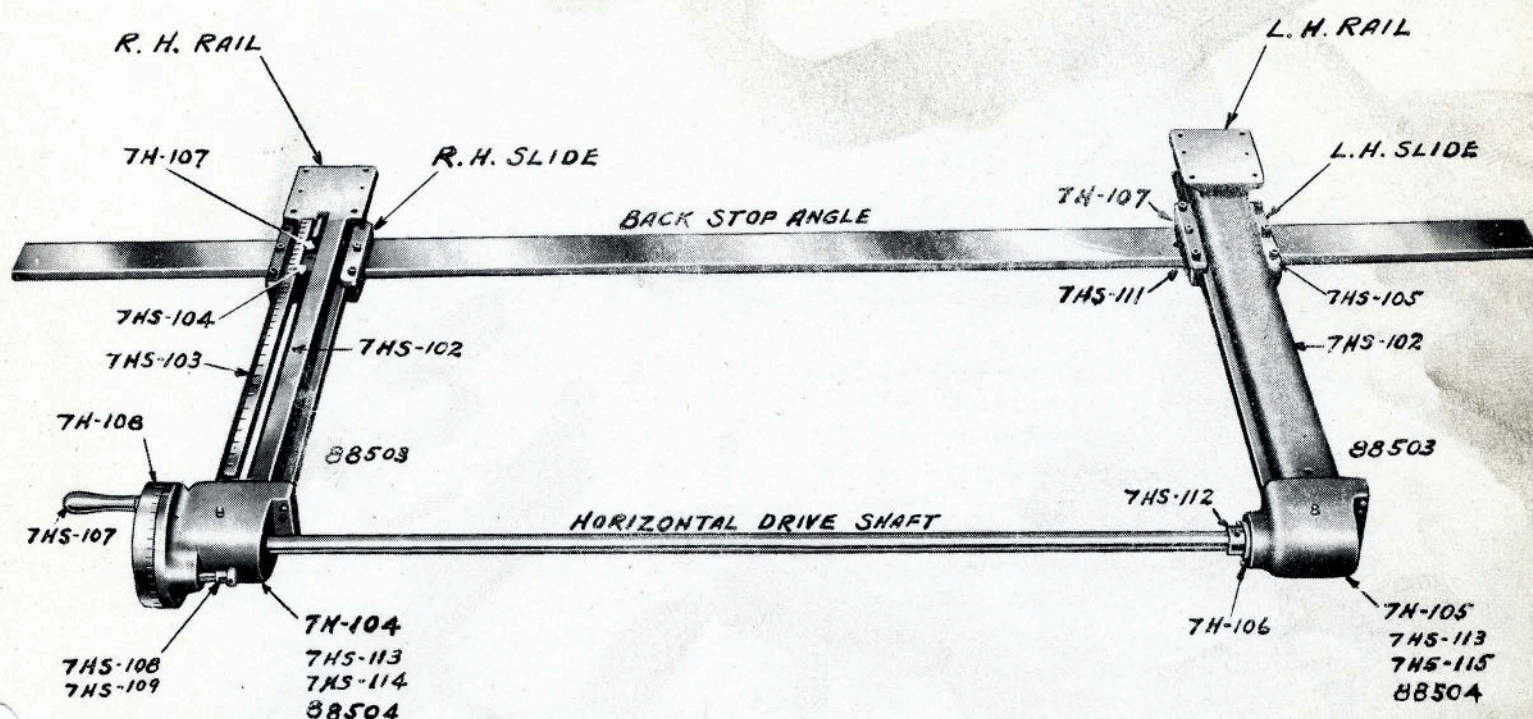
<u>NAME OF PART</u>	<u>Part No.</u>	<u>NAME OF PART</u>	<u>Part No.</u>
Table	7X-1	Motor Base	7J-25
Knife Bar	7X-2	Male Brake Shoe	7J-27
Eccentrics	7X-3	Female Brake Shoe	7J-28
		Gear Guard Cover	7J-60
L. H. End Housing	7W-2		
Upper Half Eccentric Straps	7W-6	Holddown Bar	7K-5
Lower Half Eccentric Straps	7W-7	Top Girt	7K-6
Foot Treadle Lever	7W-8	Brake Bracket	7K-55
Bull Gear	7W-10		
Bull Gear Bushing	7W-11	Pinion Shaft Bushing	7G-36
Clutch Finger Holder	7W-12	(R.H. Leg)	
R. H. End Housing	7W-13	Pinion Shaft Bushing	7G-37
Eccentric Shaft Bushings	7W-14	(L.H. Leg)	
Foot Treadle L.H.	7W-15	Flywheel	7G-50
Clutch Dog Retainer	7W-16		
Knock Off Lever	7W-18	Table Extensions	7E-6
		Motor Pulley	7E-12
Eccentric Strap Bushing	6E-54		
		Brake Drum	7T-8
Knife Bar Gibs	7H-6		
Holddown Bar Gibs	7H-16	Table Adjusting Lugs	5Y-10

PARTS LIST FOR NO. 1496
POWER SQUARING SHEAR

Steel List

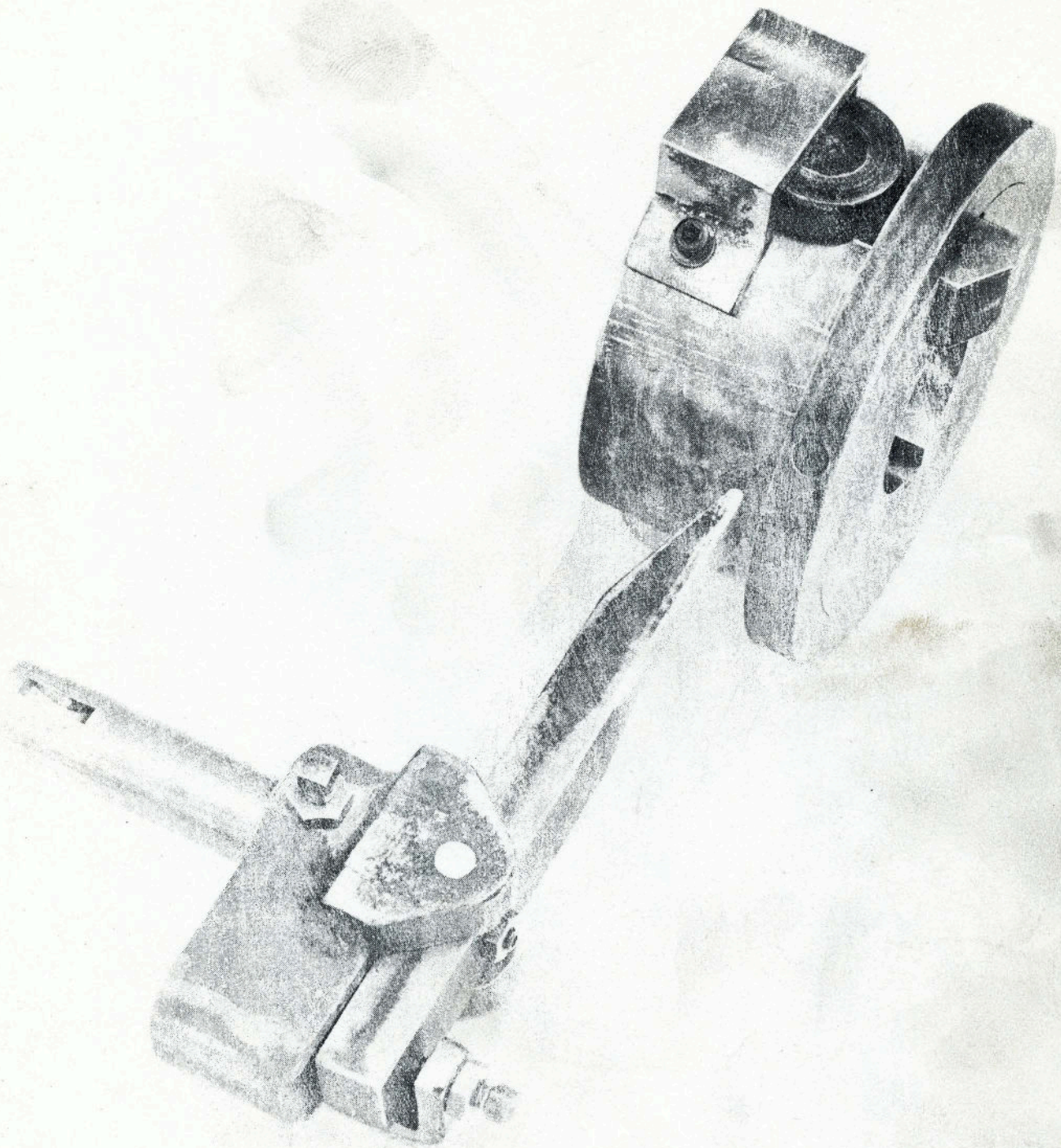
<u>Name of Part</u>	<u>Part No.</u>	<u>Name of Part,</u>	<u>Part No.</u>
Pinion Shaft	7XS-1	Treadle Spring Stud	6ES-41
Eccentric	7XS-2	Front Fence Bolts	6ES-45
Foot Treadle	7XS-3	Pinion	6E-58
Foot Treadle Shaft	7XS-4		
Tension Rod	7XS-5	Housing Ends	7ES-5
		Brake Spring Stud	7ES-101
Eye Bolts	7WS-5		
Connection Ends	7WS-6	Gear Guard Cover Knob	7JS-27
Eccentric Connections	7WS-7	Tension Rod Stud	7JS-31
Connection End Pins	7WS-8		
Clutch Drum	7WS-10	Holddown Fingers	7GS-27
Clutch Retaining Ring	7WS-11	Washers	7GS-28
Clutch Dog	7WS-12	Belt Guard	7GS-35
Clutch Plate	7WS-13	Gear Guard	7GS-50
Clutch Finger	7WS-14	Gear Guard	7GS-51
Bull Gear Retaining Collar	7WS-15	Dog Roller	7GS-64
Finger Stop	7WS-16	Finger Pivot Pin	7GS-67
Finger Holder Shaft	7WS-17	Foot Treadle Stop	7GS-89
Non-Repeat Lever	7WS-20		
Driving Stud	7WS-21	Side Gauges	7HS-7
Non-Repeat Pawl	7WS-22	Take-Up Gibs	7HS-8
Non-Repeat Roller	7WS-23	Back Stop Angle	7HS-121
Roller Stud	7WS-24		
Pawl Driving Stud	7WS-25	Foot Treadle Plugs	5KS-50
Driving Coupling	7WS-26		
Knock Off Lever Stud	7WS-27	Front Fence	7KS-4
Washers	7WS-28	Spring Housings	7KS-65
Finger Crank	7WS-29	Spring Pressure Plungers	7KS-66
		Holddown Studs	7NS-28

PARTS LIST FOR WYSONG & MILES PARALLEL BACK GAUGE



PARTS LIST FOR NO. 1496 PRECISION BACK GAUGE

<u>Name of Part</u>	<u>Part No.</u>	<u>Name of Part</u>	<u>Part No.</u>
Gear Housing, R.H.	7H-104	Handle	7HS-107
Gear Housing, L.H.	7H-105	Locking Pin	7HS-108
Gear Housing, L.H.	7H-106	Locking Pin Handle	7HS-109
Dial	7H-108	Washers	7HS-110
Rail, R.H.	7H-110	Adjustable Bolt	7HS-111
Rail, L.H.	7H-111	Screw Thrust Collars	7HS-112
Slide, R.H.	7H-152	Screw Miter Gears	7HS-113
Slide, L.H.	7H-153	Horizontal Miter Gear R.H.	7HS-114
Driving Nut (Stationary)	7H-200	Horizontal Miter Gear L.H.	7HS-115
Driving Nut (Adjustable)	7H-201	Horizontal Drive Shaft	7HS-120
		Back Stop Angle	7HS-121
Scale	7HS-103	Dial Adjustable Plate	7HS-122
Gage Indicator	7HS-104	Slide Screws.	7HS-140
Slide Gibs	7HS-105		



WYSONG & MILES CO.

GREENSBORO, NORTH CAROLINA, U. S. A.



STYLE B # 26

$\frac{5}{16} \times \frac{3}{4}$

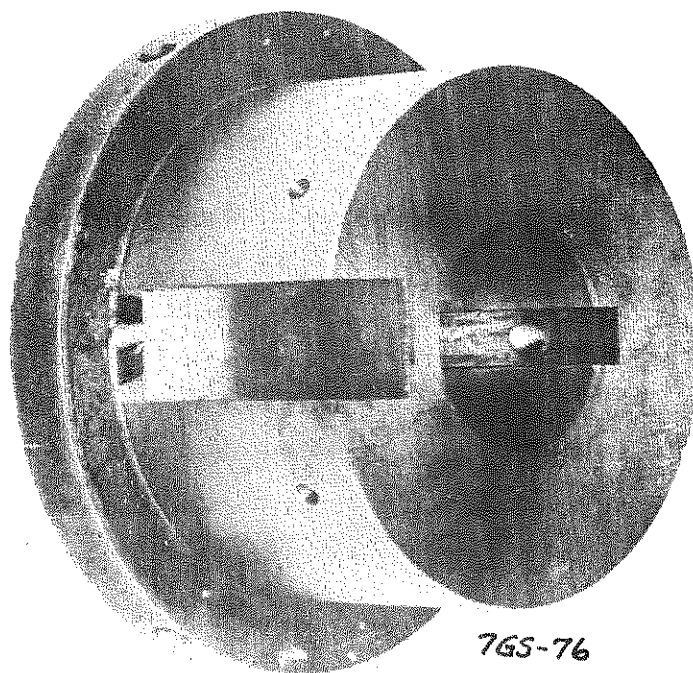
SOCKET HEAD
CAP SCREWS



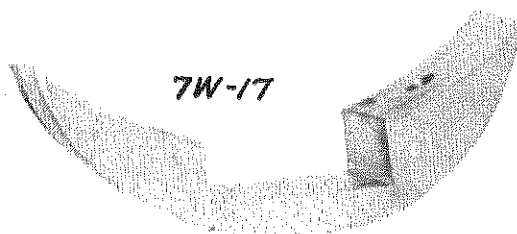
7GS-68



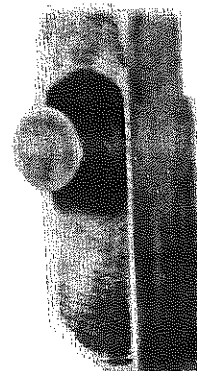
7GS-64



7GS-76

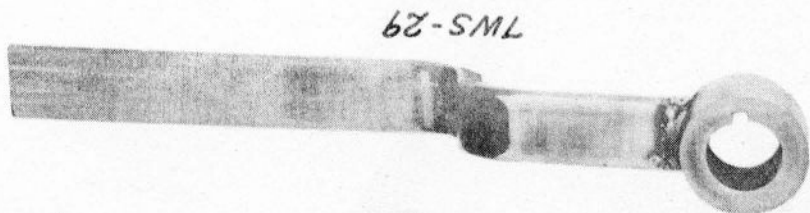
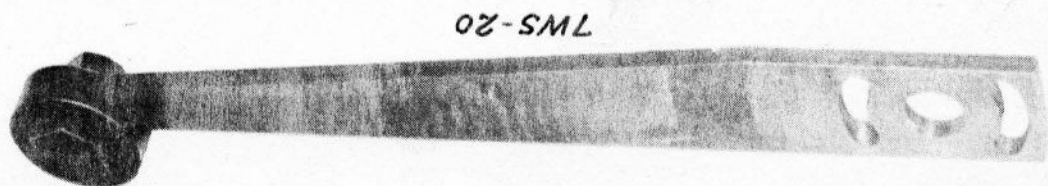


7W-17



7GS-74

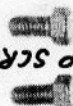
PARTS DIAGRAM WYSONG & MILES SLIDING KEY TYPE CLUTCH



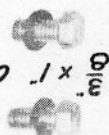
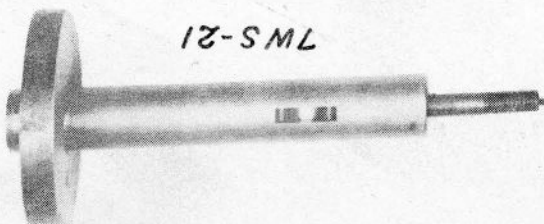
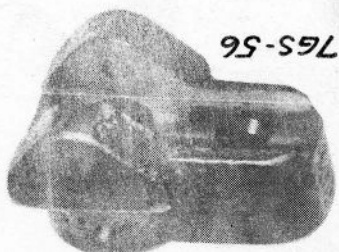
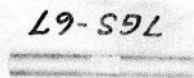
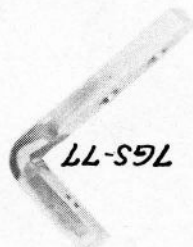
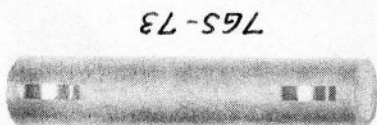
1/4" x 1" WOODRUFF KEYS
3/8" x 1" SET SCREW & NUT



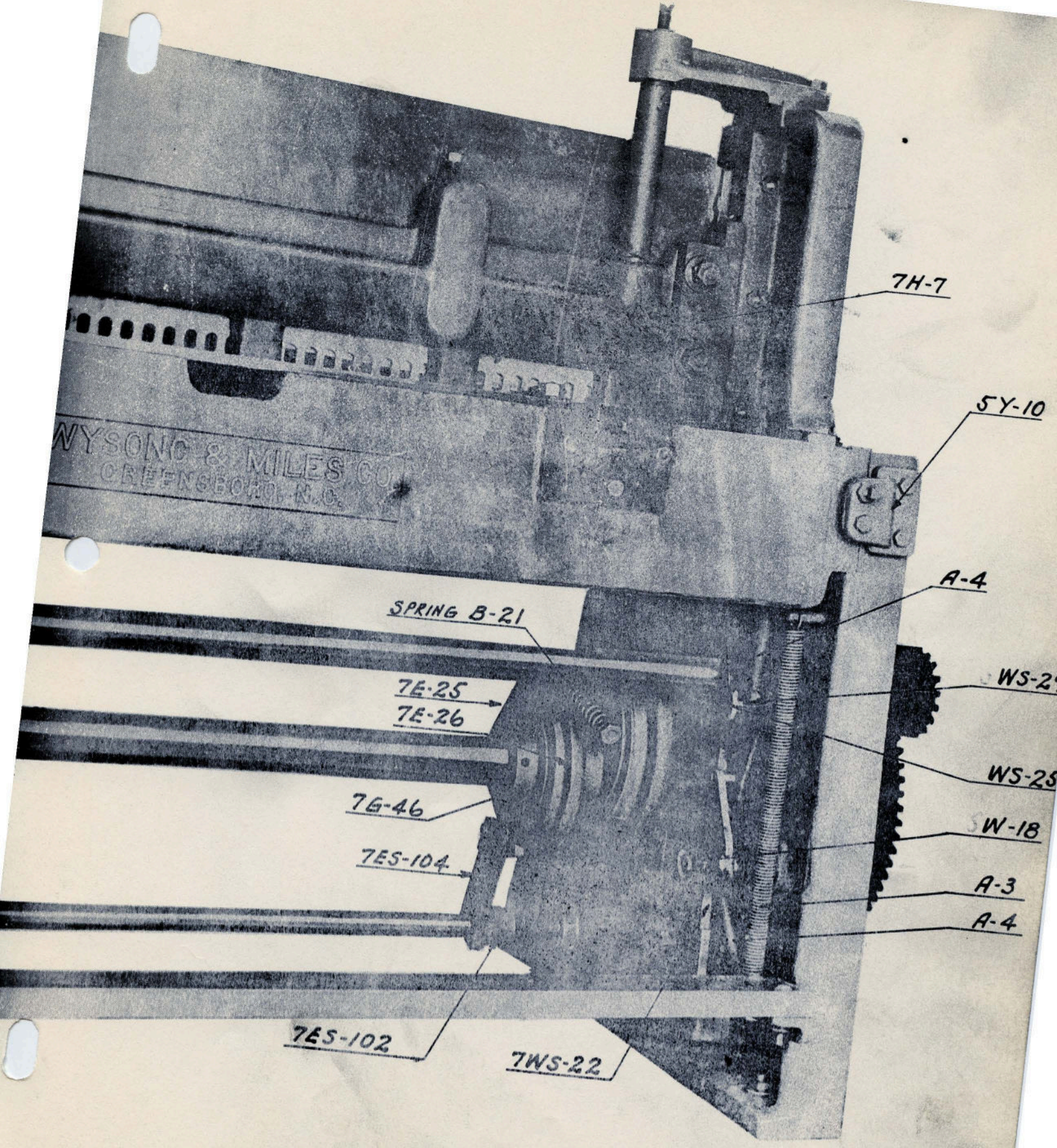
3/8" x 1" CAP SCREWS



STYLE B-#16



3/8" x 1" CAP SCREWS & LOCK WASHERS



7H-7

5Y-10

A-4

WS-2

WS-25

W-18

A-3

A-4

SPRING B-21

7E-25

7E-26

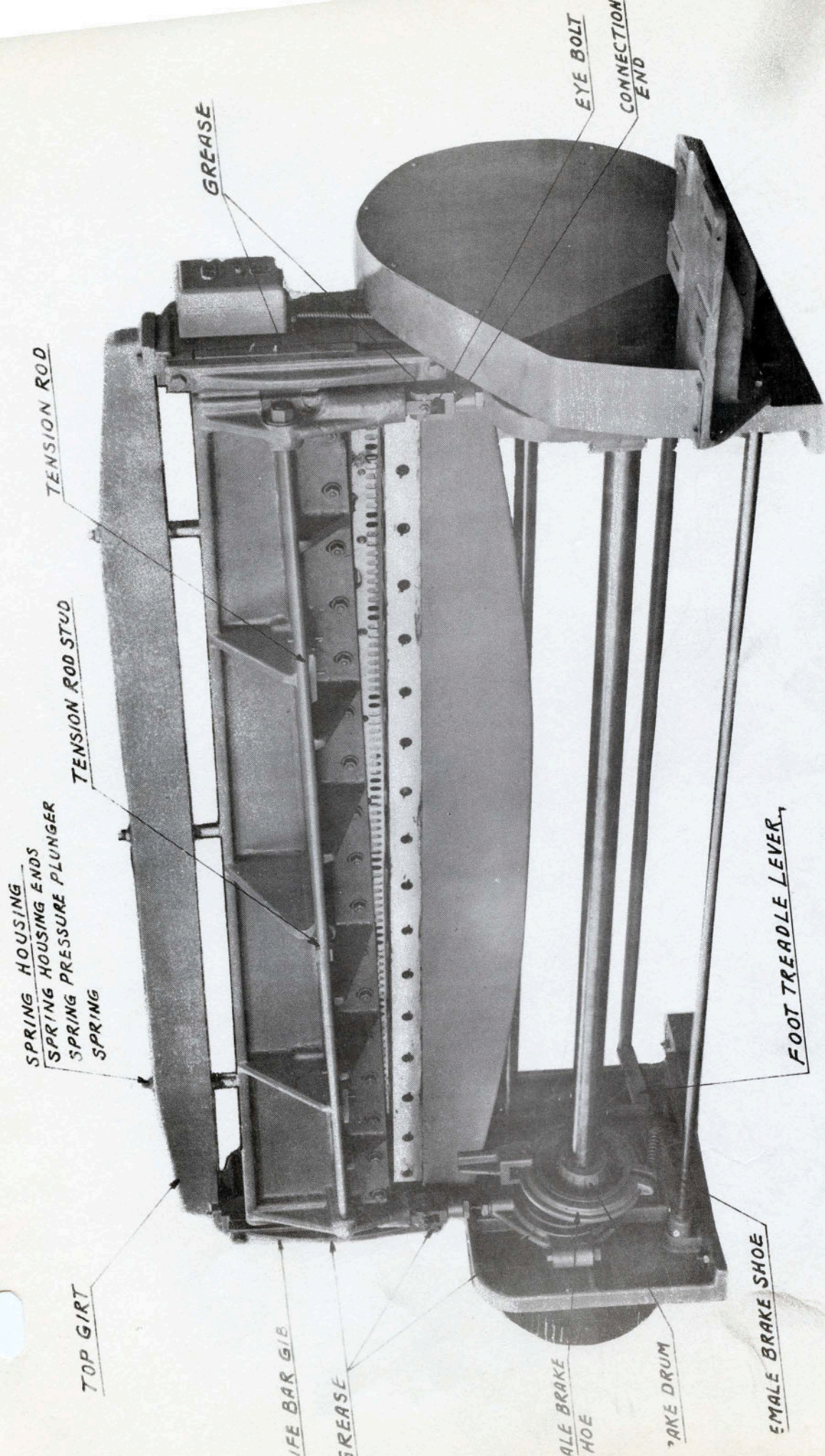
7G-46

7ES-104

7ES-102

7WS-22

WYSONG & MILES CO.
GREENSBORO, N.C.



GREASE

EYE BOLT
CONNECTION
END

TENSION ROD

TENSION ROD STUD

SPRING HOUSING
SPRING HOUSING ENDS
SPRING PRESSURE PLUNGER
SPRING

TOP GIRT

LIFE BAR GIB

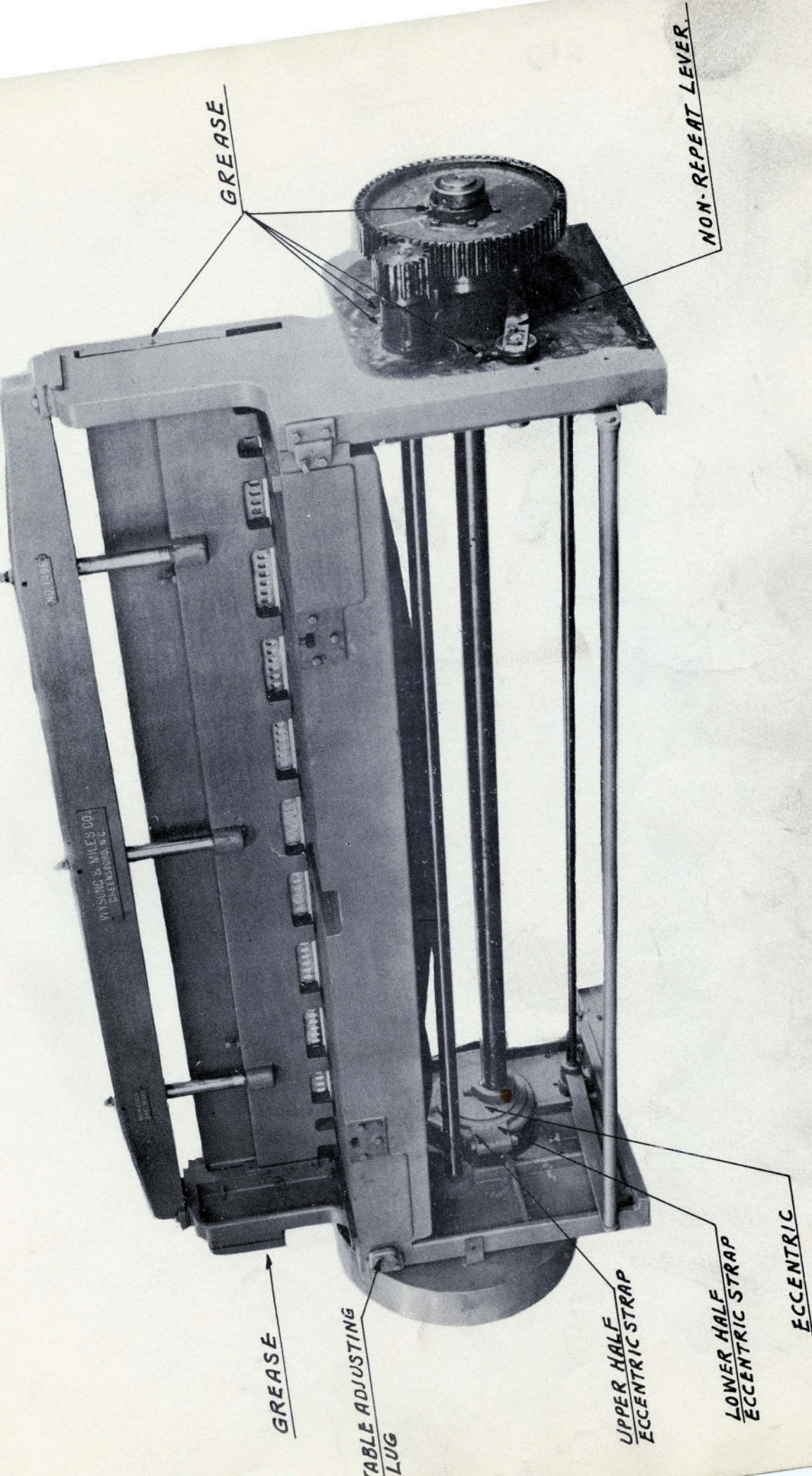
GREASE

MALE BRAKE
SHOE

BRAKE DRUM

MALE BRAKE SHOE

FOOT TREADLE LEVER



GREASE

NON-REPEAT LEVER

GREASE

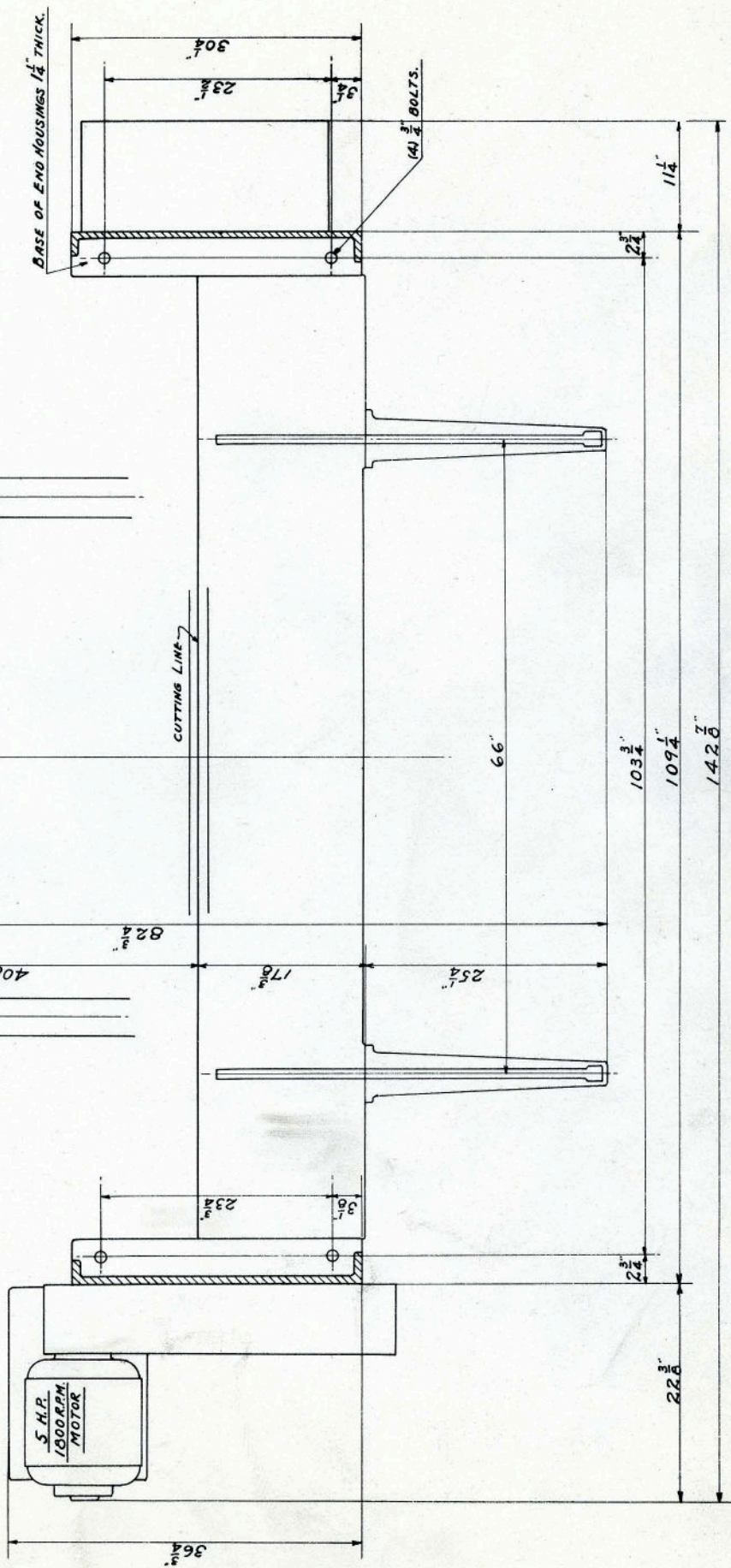
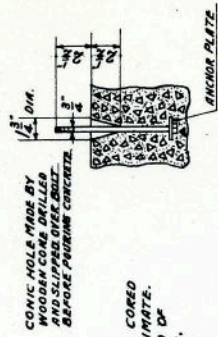
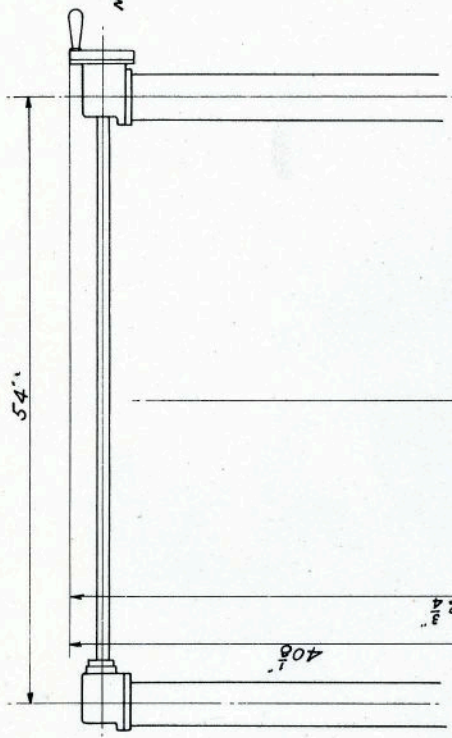
TABLE ADJUSTING
LUG

UPPER HALF
ECCENTRIC STRAP

LOWER HALF
ECCENTRIC STRAP

ECCENTRIC

WYSONG & MILES CO.
GREENSBORO, N.C.



FLOOR PLAN FOR NO. 1496 SHEAR.

WYSONG AND MILES CO.
GREENSBORO, N.C.